



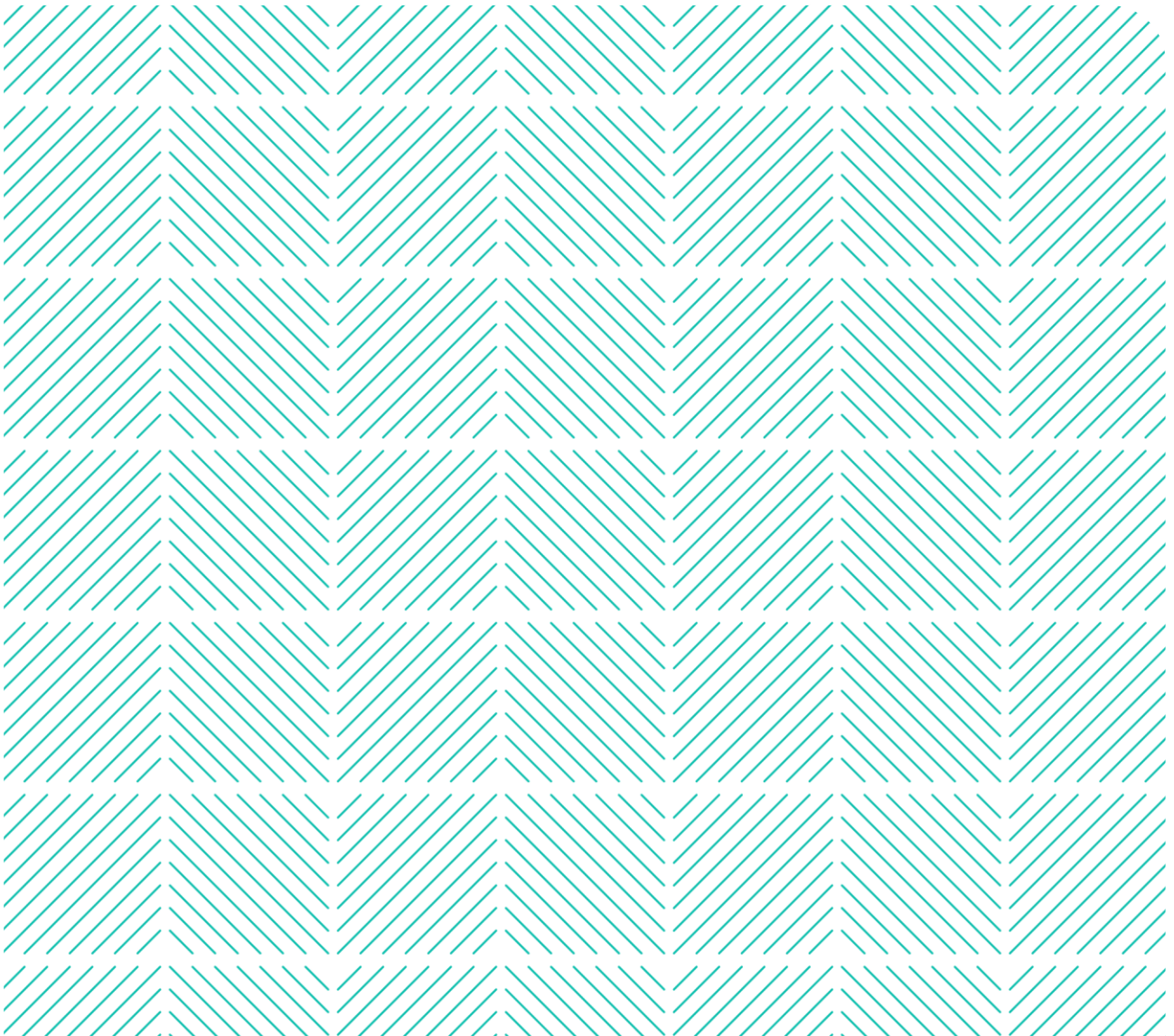
Arbeidstilsynet

Grunnlag for fastsettelse av grenseverdi

Trikloretten

Mai 2021

Revisjon av direktiv 2019/130/EU



Mai 2021
Arbeidstilsynet
Postboks 4720 Torgarden
7468 Trondheim

Tittel: Grunnlag for fastsettelse av grenseverdi for trikloretan
Revisjon av direktiv 2019/130/EU.

Dette dokumentet omhandler det toksikologiske
grunnlaget og vurderinger, samt tekniske og
økonomiske hensyn for fastsettelse av grenseverdi
for trikloretan.

Innhold

Innhold	3
Forord	4
Innledning	5
1. Stoffets identitet	5
2. Fysikalske og kjemiske data	5
2.1 Forekomst og bruk	6
3. Grenseverdier	6
3.1 Nåværende grenseverdi	6
3.2 Grenseverdi fra EU	7
3.3 Grenseverdier fra andre land og organisasjoner	7
3.4 Stoffets klassifisering	7
3.5 Biologisk overvåking	8
3.6 Andre reguleringer	8
4. Toksikologiske data og helseeffekter	9
4.1 Anbefaling fra SCOEL	9
4.2 Kommentarer fra TEAN	9
5. Bruk og eksponering	12
5.1 Opplysning fra Produktregistret	12
5.2 Eksponering og måledokumentasjon	12
6. Vurdering	13
7. Konklusjon med forslag til ny grenseverdi, korttidsverdi og anmerkninger	14
8. Ny grenseverdi, korttidsverdi og anmerkninger	14
Referanser	16
Vedlegg 1: SCOEL-dokumentasjon	17

Forord

Grunnlagsdokumenter for fastsettelse av grenseverdier utarbeides av Arbeidstilsynet i samarbeid med Statens arbeidsmiljøinstitutt (Stami) og partene i arbeidslivet (Næringslivets hovedorganisasjon/Norsk Industri og Landsorganisasjonen i Norge) i henhold til Strategi for utarbeidelse og fastsettelse av grenseverdier for forurensninger i arbeidsatmosfæren.

Dette dokumentet er utarbeidet ved implementering av direktiv 2019/130/EU fastsatt 16. januar 2019, og er den andre endringen av karsinogen-mutagen-direktivet 2004/37/EC om vern av arbeidstakere mot risiko ved å være utsatt for kreftfremkallende eller arvestoffskadelige stoffer (arbeidsmiljødirektivet). EU har som mål å fastsette juridisk bindende grenseverdier for 50 kreftfremkallende stoff gjennom fire endringsdirektiv til karsinogen-mutagen-direktivet. Når bindende grenseverdier er vedtatt i EU må medlemslandene/EØS-landene innføre samme verdi eller lavere. De bindende grenseverdiene tar hensyn til tekniske, økonomiske vurderinger i tillegg til de helsebaserte vurderingene.

Arbeidstilsynet har ansvaret for revisjonsprosessen og utarbeidelse av grunnlagsdokumenter for stoffene som blir vurdert. Det toksikologiske grunnlaget for stoffene i denne revisjonen baserer seg i hovedsak på kriteriedokumenter fra EUs vitenskapskomité for fastsettelse av grenseverdier, Scientific Committee for Occupational Exposure Limits (SCOEL). EU-kommisjonen kan også velge kriteriedokumenter fra andre vitenskapskomiteer, som ECHA sin vitenskapskomite Risk Assessment Committee (RAC). Statens arbeidsmiljøinstitutt ved toksikologisk ekspertgruppe for grenseverdier, TEAN, bidrar med toksikologiske vurderinger i dette arbeidet.

Informasjon om bruk og eksponering i Norge innhentes fra Produktregisteret, og tilgjengelige eksponeringsdata fra virksomheter i ulike næringer fås fra eksponeringsdatabasen EXPO ved Stami.

Beslutningsprosessen skjer gjennom drøftingsmøter der Arbeidstilsynet, Næringslivets hovedorganisasjon/Norsk Industri og Landsorganisasjonen i Norge deltar, samt orienteringer i møte med Regelverksforum eller per e-post, og med påfølgende offentlig høring. Konklusjonene fra høringen med forskriftsendringer og nye grenseverdier forelegges Arbeids- og sosialdepartementet som tar den endelige beslutningen om forskriftsfastssettelse av grenseverdiene.

Innledning

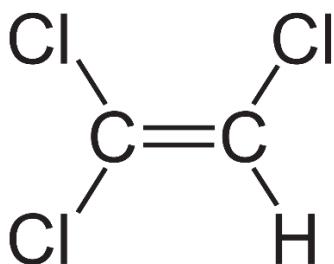
Dette dokumentet omhandler vurderingsgrunnlaget for fastsettelse av grenseverdi, korttidsverdi og anmerkninger for trikloreten. Innholdet bygger spesielt på anbefalinger fra Scientific Committee on Occupational Exposure Limits (SCOEL) i EU for dette stoffet (vedlegg 1), samt vurderinger og kommentarer fra toksikologisk ekspertgruppe for grenseverdier, TEAN, Statens arbeidsmiljøinstitutt (Stami).

1. Stoffets identitet

Trikloreten og dets molekylformel, stoffets identifikasjonsnummer i Chemical Abstract Service (CAS-nr.), European Inventory of Existing Commercial Chemical Substances (EINECS-nr. el. EC-nr.) er gitt i tabell 1. Strukturformler av et utvalg av seksverdige kromforbindelser er vist i figur 1.

Tabell 1. «Stoffnavn» og dets identitet.

Kjemisk navn	Trikloreten
Molekylformel	C ₂ HCl ₃
Synonymer	Trikloretylen TCE «Tri»
CAS-nr	79-01-6
Indeks-nr	602-027-00-9
EINECS-nr	201-167-4



Figur 1. Strukturformler av trikloreten.

2. Fysikalske og kjemiske data

Det vises til tabell 2 for fysikalske og kjemiske data for trikloreten.

Tabell 2. Fysikalske og kjemiske data for trikloret.

Molekylformel	C ₂ HCl ₃
Molekylvekt (g/mol)	131,38
Fysisk tilstand	Fargeløs veske med kloroform lignende lukt
Smeltepunkt (°C)	-83,5
Kokepunkt (101,3 kPa) (°C)	87
Selvantennelsestemperatur (°C)	420
Tetthet (20 °C) (g/cm³)	1,44
Damp tetthet (luft = 1)	4,5
Damptrykk (20 °C) (mmHg)	69
Fordelingskoeffisient n-oktanol/vann (log K_{ow})	2,42
Løselighet i vann (mmol/l)	8,37
Ekspljosjonsgrenser (%):	
Nedre (UEL)	8
Øvre (LEL)	10,5
Lukterskel (ppm)	21,4
Omregningsfaktor (20 °C)	1 pmm = 5,46 mg/m ³

2.1 Forekomst og bruk

Trikloret (TRI) er et organisk løsemiddel som har tidligere vært brukt til industriell avfetting av metaller. Stoffet har også vært brukt i lim innenfor industrisektoren. I dag er bruken kraftig redusert. Fra 1995 til 2017 er utslippene redusert med nesten 100 prosent [1, 2]. I tillegg til dets industrielle anvendelser, ble trikloret brukt fra omkring 1930 som et anestesimiddel og som smertestillende medisin i millioner av pasienter, før dets toksiske egenskaper ble påvist [3].

3. Grenseverdier

3.1 Nåværende grenseverdi

Nåværende grenseverdi (8 timer) i Norge med anmerkninger for trikloret er: 10 ppm, 50 mg/m³ med anmerking K (kjemikalier som skal betraktes som kreftfremkallende).

Denne grenseverdien ble revidert og fastlagt som administrativ norm med anmerking K i 1997 og senere forskriftsfestet i 2013 i den da nye forskrift om tiltaks- og grenseverdier.

Norge har i dag ikke korttidsverdi.

3.2. Grenseverdi fra EU

Basert på anbefalinger fra den europeiske vitenskapskomiteen, SCOELs kriteriedokument fra 2009 har EU fastsatt bindende grenseverdi. Dagens grenseverdi i EU, etter implementering av direktiv 2019/130/EU fastsatt 16. januar 2019 (andre endring av karsinogen-mutagen-direktivet 2004/37/EC) er:

BOELV (Binding Occupational Exposure Limit Value):

- 8-timers TWA: 10 ppm (54,7 mg/m³)
- Anmerkning: "skin"
- Korttidsverdi: 30 ppm (164,1 mg/m³)

3.3. Grenseverdier fra andre land og organisasjoner

Grenseverdier fra andre land og organisasjoner er gitt i tabell 3.

Tabell 3. Grenseverdier for trikloret fra andre land og organisasjoner.

Land Organisasjon	Grenseverdi (8 timer)	Korttidsverdi (15 min)	Anmerkning Kommentar
Sverige ¹	10 ppm, 54 mg/m ³	25 ppm, 140 mg/m ³	C (kreftfremkallende), H (hudopptak) (2018)
Danmark ²	10 ppm, 55 mg/m ³	-	K (kreftfremkallende) (1994)
Finland ³	10 ppm, 50 ng/m ³	-	Hud (2007)
Storbritannia ⁴	100 ppm, 550 mg/m ³	150 ppm, 820 mg/m ³	Carc (kreftfremkallende), Skin (hudopptak)
ACGIH ⁵	10 ppm	25 ppm	A2 (mistenkt humant karsinogen), BEI (biologisk grenseverdi) (2006)

¹ Arbetsmiljöverkets Hygieniska gränsvärden AFS 2015:7,

<https://www.av.se/globalassets/filer/publikationer/foreskrifter/hygieniska-gransvarden-afs-2018-1.pdf>

² At-vejledning, stoffer og materialer - C.0.1, 2007 <https://at.dk/media/5941/c-0-1-graensevaerdilisten-2007-t.pdf>.

³ Social og hälsovårdsministeriet, HTP-värden, Koncentrationer som befunnits skadliga, Helsingfors, 2016,

http://julkaisut.valtioneuvosto.fi/bitstream/handle/10024/160972/STM_10_2018_HTPvarden_2018_WEB.pdf?sequence=1&isAllowed=y

⁴ EH40 andre utgave, 2013, <https://www.hse.gov.uk/pubns/priced/eh40.pdf>

⁵ACGIH (2020). TLVs and BEIs

3.4. Stoffets klassifisering

Trikloret er klassifisert og merket i henhold til CLP Annex VI (Forordning EC No 1272/2008), tabell 3.1 (Liste over harmonisert klassifisering og merking av farlige kjemikalier). Trikloret er klassifisert og merket med koder i henhold til fareklasse, kategori og faresetninger, som gitt i tabell 4.

International Agency for Research on Cancer (IARC) har klassifisert trikloret som et gruppe 1-karsinogen (sikkert kreftfremkallende) [5].

Tabell 4. Fareklasser, farekategori med forkortelse, merkekoder og faresetninger for trikloret ^{1,2}

Fareklasse Farekategori Forkortelse	Merkekode	Faresetning
Etsende/irriterende for huden, kategori 2 (Skin Irrit. 2)	H315	Irriterer huden
Alvorlig øyeskade/øyeirritasjon, kategori 2 (Eye Irrit. 2)	H319	Gir alvorlig øyeirritasjon
Spesifikk målorgantoksisitet – enkelt eksponering, kategori 3 (STOT SE 3)	H336	Kan forårsake dødsighet eller svimmelhet
Kjønnscellemutagenitet, kategori 2 (Muta. 2)	H341	Mistenkes å kunne forårsake genetiske skader
Kreftfremkallende egenskaper, kategori 1B (Carc. 1B)	H350	Kan forårsake kreft
Farlig for vannmiljøet, kronisk kategori 3 (Aquatic Chronic 3)	H412	Skadelig, med langtidsvirkning, for liv in vann

¹ CLP ((Forordning (EC) Nr. 1272/2008), <http://www.miljodirektoratet.no/Documents/publikasjoner/M259/M259.pdf>)

² <https://echa.europa.eu/information-on-chemicals/cl-inventory-database>

3.5 Biologisk overvåking

For å vurdere grad av eksponering for forurensning i luften på arbeidsplassen kan man anvende konsentrasjonen av forurensningen i arbeidstakerens urin, blod eller utåndingsluft, eller annen respons på eksponeringen i kroppen. EU har satt verdier for dette kalt biologisk grenseverdi (BLV).

SCOEL har fremmet et forslag til biologisk grenseverdi for trikloret. Forslaget er 20 mg TCA (trikloreddisyre) / liter urin, men EU innfører ikke en biologisk grenseverdi.

3.6 Andre reguleringer

Trikloret er identifisert som et stoff med svært betenkelige egenskaper (SVHC) og står på EUs kandidatliste. Stoffene på kandidatlista er kandidater for videre regulering. Leverandører av kjemikalier og produkter som inneholder stoffer på kandidatlista har informasjonsplikt til sine kunder og til det europeiske kjemikaliebyrået ECHA [1].

Trikloret er ført opp på listen over stoffer med krav til autorisasjon (Reach, vedlegg XIV). Det er ikke tillatt å bruke stoffene på denne lista hvis ikke EU-kommisjonen, etter omfattende søknad fra virksomhetene, har godkjent hver enkelt bruk av stoffet. Trikloret er også oppført på Reach vedlegg XVII som inneholder stoffer som gir uakseptabel risiko for helse og/eller miljø. Stoffene på denne listen er helt eller delvis forbudt [2,4].

Det europeiske kjemikaliebyrået ECHA har samlet 40 regelverk i en database med informasjon om hvordan kjemiske stoffer er regulert, og regelverk for de stoffene er søkbare: [ECHA-søk](#).

I tillegg til regelverk for grenseverdi og klassifisering som er omtalt i dette dokumentet, kan man søke andre gjeldende regelverk for trikloret her: [trikloret](#).

4. Toksikologiske data og helseeffekter

4.1 Anbefaling fra SCOEL

SCOEL anbefaler en grenseverdi lik 10 ppm (54,7 mg/m³) (8-timers TWA) og en korttidsverdi lik 30 ppm (164,1 mg/m³) (15-minutters STEL)», se vedlagt SCOEL-dokument (vedlegg 1).

SCOEL har i tillegg fremmet et forslag til biologisk grenseverdi for trikloretten. Forslaget er 20 mg TCA (trikloreddiksyre) / liter urin.

4.2 Kommentarer fra TEAN

Grunnlag for bindende grenseverdi for trikloretten (TCE)

Trikloretten oppfyller kriteriene for klassifisering som kreftfremkallende (kategori 1B) i samsvar med forordning (EF) nr. 1272/2008 og er derfor definert som et kreftfremkallende stoff i henhold til direktiv 2004/37/EF.

Bakgrunnsdokumenter:

SCOELs kriteriedokument om TCE kom i 2009 [6]. Dette dokumentet er grunnlaget for den bindende grenseverdien som er vedtatt i henhold til EU 2019/130.

I tillegg har TEAN gjennomgått følgende:

Det ble etter bestilling fra ECHA i 2014 utført en dose-responsvurdering av den kreftfremkallende virkningen av TCE (ECHA project SR13) [7].

EPA utga i 2019 en omfattende risikovurdering av TCE, som foreløpig er ute på høring, og altså ikke endelig vedtatt [8].

Det er ikke funnet ytterligere litteratur med betydning for vurderingen.

Kreft-klassifisering

IARC klassifiserte triklorettylen som kreftfremkallende (gruppe 1) i 2014 (monograf 106), med spesifiseringen at TCE forårsaker kreft i nyrene, og at positive assosiasjoner er observert med Non-Hodgkin lymfom (NHL) og kreft i lever [9].

SCOEL gruppe C (gentoksisk karsinogen, hvor studier av mekanismer og/eller toksikokinetikk støtter en praktisk terskel) [6].

NTP Report on Carcinogens, 14. Edition (2016) [10]: Known to be a human carcinogen.

Kreftrisiko og mekanismer

TCE forårsaker kreft i nyrene. Det er også vist sammenheng mellom TCE-eksponering og kreft i lever, samt Non-Hodgkin lymfom. Det er generell enighet om at den viktigste mekanismen for TCEs kreftfremkallende virkning i nyrene er at det dannes gentoksiske og celletoksiske metabolitter i et reduktivt, glutation- (GSH)-avhengig metabolsk forløp. Denne GSH-avhengige metabolismen er et alternativ til den ordinære, oksidative, CYP-avhengige metabolismen. SCOELs oppfatning er at GSH-avhengig metabolisme oppstår ved høye eksponeringsnivåer, etter en overbelastning av den oksidative metabolismen, og at man derfor kan anta at det er en sublineær terskelmekanisme for kreftutvikling. Denne mekanistiske forklaringen støttes også av

epidemiologiske studier, særlig case-kontrollstudier som viser en økning av nyrekreft etter rapportering av høye, kortvarige eksponeringsnivåer (peak exposure).

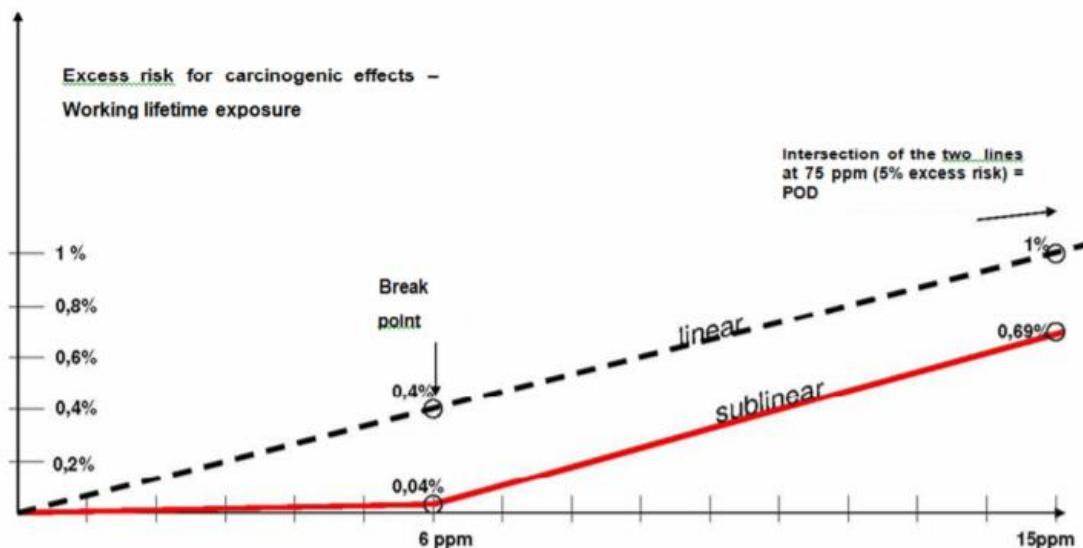
EPA har i sin risikovurdering (2019) [8] observert at CYP-avhengig og GSH-avhengig metabolisme har forskjellig dominans hos forskjellige dyrearter, og antar at det kan være individuelle forskjeller hos mennesker med hensyn til om oksidativ eller reduktiv metabolisme vil dominere. EPA velger derfor, for å beskytte sårbare individer, å anta at det er en lineær ikke-terskelmekanisme for kreftutvikling.

I ECHAs dose-responsvurdering fra 2014 [7] er det redegjort grundig for hvilke mekanismevurderinger som er gjort i tidligere kriteriedokumenter. Det fremkommer der at bortsett fra SCOEL og det tyske AGS har alle instanser, på grunn av metabolittenes gentoksiske virkning, klassifisert TCE som gentoksiske, med én lineær dose-responskurve for en ikke-terskel mekanisme.

AGS (2008) [11] har valgt en annen tilnærming. De mener også at på grunn av de gentoksiske metabolittene må TCE anses som uten terskel for kreftutvikling. Imidlertid vil det ved et visst nivå av eksponering dannes en rekke celletoksiske metabolitter som vil kunne gi nyreskade, noe som medfører en betydelig økning av kreftrisikoen. AGS presenterte derfor en dose-responskurve med to lineære dose-responsammenhenger; en lineær dose-responskurve i de lavere eksponeringsnivåer, og en brattere lineær dose-responskurve i nivået over terskelen for celletoksisitet.

I ECHA 2014 [7] blir AGSs tilnærming vurdert som den som har det beste vitenskapelige grunnlaget, og denne ble lagt til grunn for den videre dose-responsvurderingen.

Figure 5-1. Excess risk for carcinogenic effects-Working lifetime exposure



Figuren, som er hentet fra ECHA 2014 [7], viser de to alternative tilnærmingene basert på data fra Charbotel 2006 [12], som av både SCOEL, EPA og AGS ble vurdert som det beste grunnlaget for å utlede en dose-responskurve.

Andre helseeffekter

TCE er hudirriterende. Ved gjentatt bruk vil fettlaget i huden fjernes, med rødhet og tørrhet som resultat. Noen casestudier rapporterer også hudsensibilisering.

Det er vist en sammenheng mellom TCE-eksponering og endring i immunologiske reaksjoner, også ved relativt lave eksponeringsnivåer, og autoimmune sykdommer som lupusnefritt er påvist i dyreforsøk.

Narkotiske effekter er vist ved høye eksponeringsnivåer. Andre akutteffekter, som hjerterytmeforstyrrelser, lever- og nyretoksisitet er rapportert ved kortvarige, høye eksponeringsnivåer.

Effekter på avkom hos dyr er vist ved høye eksponeringsnivåer, og tilsvarende, ikke-signifikante, sammenhenger er sett i studier av mennesker.

Dose-responsvurderinger

SCOEL klassifiserer TCE som et gentoksisk karsinogen, hvor toksikokinetiske og gentoksiske studier sannsynliggjør en "praktisk" terskel. Grunnen til dette er at celletoksiske og gentoksiske metabolitter dannes etter en metning av den ordinære oksidative metabolismen, ved høye konsentrasjoner (dvs. ved overskridelse av tidligere OEL, 50 ppm, og toppeksponeringer på flere hundre ppm). Det er ikke vist noen overhyppighet av nyrekreft ved stabile, lavere eksponeringsnivåer. SCOEL antar derfor at et eksponeringsnivå som beskytter mot nyreskade vil beskytte mot nyrekreft. De har derfor i dose-responsvurderingen benyttet studier av sammenheng mellom eksponering og NAG, en proteinmarkør i urin som indikerer tidlig nyreskade. Utfra disse studiene er det fastsatt en LOAEL på 30 ppm, og en NOAEL på 6-10 ppm.

På dette grunnlaget foreslår SCOEL en OEL (8 timer TWA) på 10 ppm.

Ettersom høye toppnivåer av TCE er beskrevet som kritiske i utviklingen av nyrekreft, vil en korttidsverdi representere en ytterligere beskyttelse mot potensielt nyretoksiske overeksponeringer. Korttidsverdien (15 minutter) foreslås på grunnlag av LOAEL, 30 ppm.

Dose-responsvurdering utført på oppdrag fra ECHA:

Basert på de samme biomarkørstudiene som SCOEL benyttet (NOAEL 6-10 ppm) ble det satt en terskel for nyretoksisitet ved 6 ppm. Over terskelen ble det estimert en lineær dose-respons-kurve basert på epidemiologiske undersøkelser av nyrekreftforekomst. Under terskelen ble det også beregnet en lineær dose-responskurve, men hvor risikoen er nedskalert med 1/10 i forhold til kurven over terskelen:

8t TWA trikloretren konsentrasjon i 40 år ¹		Økt risiko for nyrekreft
mg/m ³	Ppm	
400	73	481: 10 000
300	55	351: 10 000
100	18	91,0: 10 000
60	11	39,0: 10 000
55	10 ²	35,8: 10 000
40	7,3	13,0: 10 000
33	6,0 ³	4,0: 10 000
20	3,6	2,4: 10 000
10	1,8	1,2: 10 000
5	0,9	0,6: 10 000
1	0,18	0,12: 10 000
0,1	0,018	0,012: 10 000

¹ Tabell basert på ECHA SR13

² Bindende grenseverdi i henhold til EUs 2. direktiv 1919/130

³ Knekkpunkt for sub-lineær dose-responskurve

EPA og WHO har utviklet dose-responsammenhenger basert på livstidseksponering 24 timer i døgnet i 78 år. Disse modellene kan ikke uten videre brukes i en arbeidsmiljø sammenheng.

Biologisk monitorering

Monitorering av TCA i urin som en kontroll av eksponering er ifølge SCOEL veletablert, og det er fastslått at 10 ppm TCE korresponderer med 20 mg/L urin TCA. TCA har lang halveringstid, og det anbefales derfor at biologisk monitorering utføres på slutten av siste arbeidsskift i en arbeidsuke eller skiftperiode.

I industriell praksis kan eksponeringsmålinger og biologisk monitorering suppleres med målinger av biologiske markører for lett eller subklinisk nyreskade, som NAG eller beta2-mikroglobulin.

Hudanmerkning

TCE opptas effektivt via alle hovedruter, også hud. Det er av den grunn satt en hudanmerkning.

TEANs vurdering

Det foreligger flere modeller for dose-responsammenhengen mellom TCE-eksponering og utvikling av nyrekreft. Dagens bindende direktiv bygger på SCOELs modell. Ifølge en noe mer konservativ modell presentert av AGS i 2008, og i 2014 støttet av en ekspertgruppe nedsatt av ECHA, vil eksponering for dagens grenseverdi/EUs bindende grenseverdi medføre en øket risiko for nyrekreft på 3,6/1000 gjennom et 40 års yrkesliv.

På grunn av risiko for nyreskade ved kortvarige høye eksponeringer for TCE bør det settes en korttidsverdi.

På grunn av betydelig hudopptak av TCE vurderer TEAN at en hudanmerkning er berettiget.

5. Bruk og eksponering

Trikloret er et organisk løsemiddel som har tidligere vært brukt til industriell avfetting av metaller. I dag er bruken kraftig redusert. Fra 1995 til 2017 er utslippene redusert med nesten 100 prosent.

5.1. Opplysning fra Produktregistret

Produktregisteret inneholder ingen opplysninger om trikloret.

5.2. Eksponering og måledokumentasjon

5.2.1. EXPO-data

Rapporterte målinger av trikloret er hentet fra STAMIs eksponeringsdatabase EXPO.

Eksponeringsmålinger av trikloret registrert i EXPO som er vurdert er utført i perioden 2000-2008. Resultatene viser totalt 40 prøver oppgitt med konsentrasjonsangivelse mg/m³. Av disse prøvene er 11 personbårne og 29 stasjonære.

Resultatene er fremstilt i tabell 5 og viser lave verdier, hele 91 % av de personbårne målingene ligger under ¼ av grenseverdien på 50 mg/m³. 100 % av de stasjonære prøvene ligger under grenseverdien.

Tabell 5. Oversikt over næringer hvor det er foretatt målinger av trikloret i perioden 2000-2008 for personbårne prøver og 2000-2006 for stasjonære prøver og måleresultater for disse målingene. Næringer hvor det er registrert færre enn 4 målinger er utelatt fra tabellen. GV = grenseverdi, 50 mg/m³

Næringskode	Antall virksomheter	Antall prøver	Gj.snitt mg/m ³	Andel > GV	Andel < GV	Andel > ¼ GV og < GV	Andel < 1/4 GV
Personbårne målinger 2000-2008							
Produksjon av metallvarer unntatt maskiner og utstyr og Innsamling av farlig avfall	5	11	9	1* 9 %	10 91 %	0 0 %	10 91 %
Stasjonære målinger 2000-2006							
Produksjon av metallvarer unntatt maskiner og utstyr og Innsamling av farlig avfall	7	29	4,4	0 %	100 %	-	-

* Høy verdi- overflatebehandling (beising) i bransje produksjon av kraner

5.2.2. Prøvetakings- og analysemetode

I tabell 6 er anbefalte metoder for prøvetaking og analyser av trikloret presentert.

Tabell 6. Anbefalte metoder for prøvetaking og analyse av trikloret.

Prøvetakingsmetode	Analysemetode	Referanse
Samles opp på kullrør, ekstraheres med CS ₂	GC-FID ¹	NIOSH metode 1022 ²

¹ GC-FID: gasskromatografi med en flammeionisasjonsdetektor

² NIOSH metode 1022: <https://www.cdc.gov/niosh/docs/2003-154/pdfs/1022.pdf>

6. Vurdering

Trikloret er et stoff som er underlagt strenge restriksjoner gjennom REACH, og som er mindre og mindre i bruk både i europeisk og norsk arbeidsliv.

Det foreligger ikke data fra Produktregisteret, så hvor mye som finnes på norske arbeidsplasser har vi ikke data på.

Norge har allerede samme grenseverdi som EU-direktivet på 10 ppm (50 mg/m³). Eksponeringsdata fra EXPO viser at resultatene er lave, og vi antar at innføring av en korttidsverdi for de fleste norske virksomheter ikke vil by på utfordringer.

Arbeidstilsynet slutter seg til anbefalingen om anmerkning for hudopptak, basert på anbefalingen fra SCOEL og TEAN.

EUs konsekvensvurdering konkluderer med at innføringen vil medføre minimale kostnader [13].

Arbeidstilsynet mener at den foreliggende dokumentasjonen fra SCOEL og TEAN taler for at grenseverdien bør senkes ytterligere. TEAN viser til at eksponering for dagens grenseverdi/EUs bindende grenseverdi vil medføre en øket risiko for nyrekreft på 3,6/1000 gjennom et 40 års yrkesliv. En reduksjon av grenseverdien til 6 ppm vil redusere denne restrisikoen til 4/10000. Gitt de lave eksponeringsnivåene som er registrert i EXPO antas det at en grenseverdi på 6 ppm ikke vil medføre tekniske eller økonomiske utfordringer for norske virksomheter.

Arbeidstilsynet kan derfor ikke se at det foreligger tekniske eller økonomiske hensyn som tilsier at det vil være utfordrende for norske virksomheter å holde eksponeringsnivåene under den foreslåtte grenseverdien på 6 ppm.

7. Konklusjon med forslag til ny grenseverdi, korttidsverdi og anmerkninger

På bakgrunn av den foreliggende dokumentasjonen og en avveining mellom de toksikologiske dataene og eksponeringsdata (dvs. tekniske og økonomiske hensyn) for trikloret, forslås det at dagens grenseverdi reduseres og anmerkning K (kjemikalier som kan tas opp gjennom huden) beholdes. Det innføres en korttidsverdi, samt anmerkning H for hudopptak og anmerkning G (EU har fastsatt en bindende grenseverdi og/eller anmerkning for stoffet).

Grenseverdi, korttidsverdi og anmerkning for trikloret:

- Grenseverdi (8-timers TWA): 6 ppm (33 mg/m³)
- Korttidsverdi (15 min STEL): 30 ppm (164 mg/m³)
- Anmerkninger: H (kjemikalier som kan tas opp gjennom huden), K (kjemikalier som skal betraktes som kreftfremkallende.), G (EU har fastsatt en bindende grenseverdi og/eller anmerkning for stoffet) og S (Korttidsverdi er en verdi for gjennomsnittskonsentrasjonen av et kjemisk stoff i pustesonen til en arbeidstaker som ikke skal overskrides i en fastsatt referanseperiode. Referanseperioden er 15 minutter hvis ikke annet er oppgitt.).

8. Ny grenseverdi, korttidsverdi og anmerkninger

På grunnlag av drøftinger med partene og høringsuttalelser ble ny grenseverdi og korttidsverdi for trikloret fastsatt til:

Grenseverdi (8-timers TWA): 6 ppm (33 mg/m³)

Korttidsverdi (15 min STEL): 30 ppm (164 mg/m³)

Anmerkninger:

H (kjemikalier som kan tas opp gjennom huden),

K (kjemikalier som skal betraktes som kreftfremkallende.),

S (Korttidsverdi er en verdi for gjennomsnittskonsentrasjonen av et kjemisk stoff i pustesonen til en arbeidstaker som ikke skal overskrides i en fastsatt referanseperiode. Referanseperioden er 15 minutter hvis ikke annet er oppgitt.) og

G (EU har fastsatt en bindende grenseverdi og/eller anmerkning for stoffet)

Referanser

1. <https://miljostatus.miljodirektoratet.no/tema/miljogifter/prioriterte-miljogifter/trikloreten-tri/>
2. <https://www.miljodirektoratet.no/ansvarsomrader/kjemikalier/regelverk/reach/reach-kandidatlista-svhc-lista/?listcasnr=79-01-6>
3. <https://no.wikipedia.org/wiki/Trikloretylen>
4. <https://www.miljodirektoratet.no/chemicallist/61?listcasnr=79-01-6>
5. IARCs liste over klassifisering, <https://monographs.iarc.fr/list-of-classifications>
6. SCOEL: Recommendation from the Scientific Committee on Occupational Exposure Limits for trichloroethylene SCOEL/SUM/142, April 2009.
7. Larsen PB, Giovalle E: Trichloroethylene – Carcinogenicity dose-response analysis. ECHA project SR13, Final report May 2014.
https://echa.europa.eu/documents/10162/13641/tce_carcinogenity_dose-response_analysis_final_report_en.pdf/fbcd4b8d-eab7-4788-bef5-8815b584c5ff.
8. EPA: Risk Evaluation for Trichloroethylene. EPA Document #740R18008
9. IARC: Trichloroethylene, tetrachloroethylene, and some other chlorinated agents. IARC Monographs Volume 106, 2014.
10. NTP Report on Carcinogens, 14. Edition (2016)
11. AGS (2008)
12. Charbotel B, Fevotte J, et al. Casecontrol study on renal cell cancer and occupational exposure to trichloroethylene. Part II: Epidemiological aspects. Annals of Occupational Hygiene, 50, 2006, 777-787
13. EU: Second study to collect updated information for a limited number of chemical agents with a view to analyse the health, socio-economic and environmental impacts in connection with possible amendments of Directive 2004/37/EC. Final Report January 2017.

Vedlegg 1: SCOEL-dokumentasjon

SCOEL/SUM/142

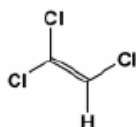
April 2009

*Recommendation from the Scientific Committee on
Occupational Exposure Limits
for Trichloroethylene*

8-hour TWA:	10 ppm [54.7 mg/m ³]
STEL (15 mins):	30 ppm [164.1 mg/m ³]
Additional classification:	“skin” notation
Biological Limit Value (BLV):	20 mg TCA (trichloroacetic acid) / liter urine
[Sampling time: end of the last shift of a workweek or a shift period]	

Substance identification

Trichloroethylene:



Synonyms: Trichloroethene; 1,1,2-Trichloroethylene; Ethene, trichloro-; Ethylene, trichloro-

EC No.: 201-167-4

Annex 1 Index No.: 602-027-00-9

EU-Classification: Carc. Cat. 2; R45 - Muta. Cat. 3; R68 - R67 - Xi; R36/38 - R52-53

CAS No.: 79-01-6

Mwt: 131.39

Conversion factor (20 °C, 101 kPa): 1 ppm = 5.47 mg/m³; 1 mg/m³ = 0.183 ppm

This evaluation is based on Greim (1996), ATSDR (1997), Brüning and Bolt (2000), EPA (2001), Clewell and Andersen (2004), ECB (2004), Harth et al. (2005), NRC (2006), Caldwell and Keshava (2006), Chiu et al. (2006a, b), Scott and Chiu (2006), Lock and Reed (2006), Watson et al. (2006), Lamb and Hentz (2006), the National Health

2

Council/Committee on Human Health Risk of Trichloroethylene (2006) and the references cited in these reviews.

1 Physico-chemical properties

Trichloroethylene (TCE) is a colourless liquid with a characteristic odour similar to chloroform. Of the many values reported for physico-chemical properties, those used in the "Risk Assessment Report" for modelling purposes are given here. The boiling point of the substance is 86-88 °C and the vapour pressure is 86 hPa at 20 °C. The water solubility of TCE is 1.1 g/l at 20 °C and the log P_{ow} is 2.29. The substance has a density of 1.465 g/cm³. No flash point is given (ECB, 2004).

2 Occurrence/use and occupational exposure

The production volume of trichloroethylene (TCE) is between 51000 and 225000 tonnes per year (1996). Today, the purity is 99.9% w/w with additives as stabilisers (thymol 51%, triethylamine 51%, 2-methyl-3-butan-2-ol and others with lower percentage). The substance is mainly used for vapour degreasing and cleaning of metal parts, in adhesives, as a solvent and for synthesis in the chemical industry, e.g. in the production of HFC 134a (1,1,1,2-tetrafluoroethane) and HCFC 133a (1-chloro-2,2,2-trifluoroethane). Workplace exposure in metal cleaning is mostly below 30 ppm (164 mg/m³). However, short-term exposure may reach much higher values. Personal exposure data in England (data from the Health and Safety Executive, HSE) in the years 1994/1995 showed an exposure above 300 ppm (1650 mg/m³) during cleaning of a degreasing bath in 20% of the cases (ECB, 2004).

3 Health significance

3.1 Toxicokinetics

3.1.1 Human data

TCE is well absorbed via all major routes of exposure. Quantitative data are available for inhalation exposure, for which uptake was between 28% and 80% (ECB, 2004). The absolute uptake increased with increasing physical exercise (Astrand and Ovrum, 1976). Oral uptake was demonstrated after accidental or deliberate ingestion of TCE. However, no quantitative information is available (ECB, 2004). Dermal exposure was tested with volunteers, demonstrating considerable percutaneous absorption as evidenced by measured TCE concentrations in blood or in exhaled air (Sato and Nakajima, 1978; Stewart and Dodd, 1964). The rate of dermal uptake was not determined.

TCE is rapidly distributed throughout the body, crosses the blood-brain barrier and the placental barrier and accumulates in fat tissue (ECB, 2004).

No relevant qualitative differences in metabolism between experimental animals and humans were observed. Major metabolic pathways are described below (animal data). In humans, (free and conjugated) trichloroethanol (TCOH) is found as the dominant excretion product, as well as trichloroacetic acid (TCA), furthermore dichloroacetic acid (DCA) and, to a larger extent than in experimental animals, monochloroacetic acid (Soucek and Vlachova, 1960). N-Hydroxyacetylaminopropanol and N-acetyldichloro vinylcysteine have also been detected in humans. The relative amount of urinary TCA is higher in humans than in experimental animals. Women eliminated less unchanged TCE than did men (Nomiyama and Nomiyama, 1971, 1974a, b).

Regarding the oxidative metabolism by CYP2E1 (see also 3.1.2), it should be noted that there is a variability in expression of this enzyme in humans, especially between different ethnic groups (Bolt et al. 2003).

A steady-state for TCE in blood is reached after continuous exposure after around two hours. Elimination is best described by a three-compartment model composed of richly perfused tissues (half-life of TCE 2-3 minutes), lean body mass (half-life TCE about 30 minutes) and fat-rich tissues (half-life TCE 3.5-5 hours) (Sato et al., 1977). Blood concentrations of TCE increased during five consecutive days of exposure due to accumulation in fat tissue. The half-life of TCOH in blood is 10-12 hours, leading to accumulation during the working week. Steady-state is reached by the fifth day after intermittent exposure to 250 ppm TCE (1770 mg/m³). Following repeated exposure to 50 ppm (275 mg/m³), elimination from blood was complete within 4 days after the last exposure. For TCA, even longer half-lives in blood are reported, caused by its extensive plasma protein binding. Elimination from blood (half-life 70-100 hours) was nearly complete 13 days after the last exposure to 50 ppm TCE following repeated inhalation (Monster et al., 1976, 1979; Soucek and Vlachova, 1960; Ertle et al., 1972; Müller et al., 1972, 1974).

TCE metabolites are mainly excreted via the urine, namely 29-50% of TCE as (free plus conjugated) TCOH and 10-24% of absorbed TCE as TCA (Monster et al., 1976, 1979; Soucek and Vlachova, 1960). Other studies reported that up to 44% of TCE could be excreted as TCA (Nomiyama and Nomiyama, 1971).

In addition to oxidative metabolism, a minor glutathione-dependent reductive pathway (see animal data) is also relevant for humans, as β -lyase activity has been demonstrated in human kidneys by the detection of N-acetyldichloro vinylcysteine in the urine of workers. This metabolite was also excreted by male volunteers after exposure to low concentrations (50 ppm and above) of TCE (Lash et al., 1999).

TCE intake interacts with the intake of alcohol, leading to alcohol intolerance in some individuals and inhibition of TCE metabolism (Müller et al., 1975; Davidson and Beliles, 1991).

3.1.2 Animal data

TCE is well absorbed by all major routes of exposure. After short-term inhalation exposure of rats to very high concentrations of TCE, 31-79% was retained (Forssman and Holmquist, 1953). In mice, 40-54% uptake was shown (Bergman, 1979). After oral uptake by rats, mice or rabbits, 80-98% of the activity of radiolabelled TCE was recovered in expired air or urine (Prout et al., 1985; Dekant et al., 1984). Oral uptake in mice occurred faster than in rats and higher peak levels were reached (Larson and Bull, 1992). Dermal absorption of liquid TCE through mouse skin was around 8 $\mu\text{g}/\text{cm}^2 \cdot \text{minute}$ (Tsuruta, 1978) and around 5.4 $\mu\text{g}/\text{cm}^2 \cdot \text{minute}$ for absorption through guinea pig skin with TCE in aqueous solutions (Bogen et al., 1992). *In vitro* studies with rat skin indicated dermal uptake of 12 $\mu\text{g}/\text{cm}^2 \cdot \text{minute}$ (Tsuruta, 1978).

Similar to humans, TCE is rapidly distributed throughout the body, crosses the blood brain barrier and the placental barrier, and tends to accumulate in fat tissues. In rats, saturation of oxidative metabolism of TCE occurs at lower levels than in mice (ECB, 2004).

4

Major metabolic pathways are the same for different animal species and for different routes of exposure. However, quantitative differences exist between species and strains. TCE is rapidly oxidised by cytochrome P450 (mainly CYP2E1), via the respective epoxide, to trichloroacetaldehyde (chloral). This metabolite is further metabolised to TCOH or competitively to TCA, both of which are excreted in free or conjugated forms (Caldwell and Kesheva, 2006). Considerably higher levels of TCOH were found in mice compared to rats (Larson and Bull, 1992; Bull et al., 1993). A minor fraction appears as dichloro- and monochloroacetic acid. Other minor pathways result in the formation of carbon dioxide, carbon monoxide, oxalic acid, and glyoxylic acid. From the epoxide also N-hydroxyacetylaminoethanol is formed (reaction with phosphatidylethanolamine as a constituent of lipids). In a recent publication of Ramdhan et al. (2008), the CYP2E1-mediated oxidative metabolism of TCE was viewed in conjunction with hepatotoxicity.

Elevated formic acid levels were found in the urine of experimental animals after exposure to TCE. However, formic acid is not a TCE metabolite. The TCE metabolites TCOH and TCA are suspected to interact with vitamin B₁₂ through a free-radical mechanism inducing B₁₂ deficiency and, as a consequence, also folate deficiency. As a result of folate deficiency, excess formic acid is excreted in urine (Dow and Green, 2000; Harth et al., 2005).

Apart from oxidative metabolism, TCE is also metabolised via glutathione-S-transferase to S-1,2-dichlorovinyl glutathione and to S-(1,2-dichlorovinyl)-L-cysteine (DCVC). This intermediate may be transformed by three metabolic pathways: either to N-acetyldichloro vinylcysteine by N-acetyltransferase or (by cleavage with β -lyase) to chlorothionoacetyl or chlorothioketene or by flavin monooxygenase to produce dichlorovinylcysteine sulphoxide. The mercapturic acids (N-acetyldichloro vinylcysteine) may be present as regioisomers, which were eliminated by rats in minimal amounts. However, even if mercapturic acids are not detected in urine, the glutathione pathway may be relevant because of the mentioned metabolic activation via β -lyase leading to the toxicologically important chlorothioketenes, which may finally be hydrolysed to monochloroacetic acid. Dichlorovinylcysteine sulphoxide may also be activated as it is a substrate for renal β -lyase, but it is probably toxicologically active on its own (Lock and Reed, 2006, Chiu et al., 2006b, Greim, 1996, ECB, 2004). Thus, although the glutathione-pathway only contributes slightly to the total elimination of TCE, it may be important because of its toxicologically relevant metabolites.

The half-lives of TCOH in blood of 2-5.3 hours (Sprague-Dawley rats) or 0.5-2.7 hours (B6C3F1 mice) were considerably lower than in humans (10-12 hours). Similarly, the TCA half-lives of 5-7 and 4-7.7 hours in rats and mice, respectively, were much lower than in humans (70-100 hours) (Larson and Bull, 1992; Bull et al., 1993).

Elimination after inhalation exposure of TCE is mainly via the urine after extensive metabolism. Other pathways of excretion are the faeces and exhaled air (carbon dioxide). As shown for the oral pathway, low inhalation exposure of both rats and mice resulted in approximately 65% of the dose being recovered as metabolites in urine, 7-23% as metabolites in faeces, 9-13% were eliminated as CO₂ and 1-4% as unchanged TCE in air (Prout et al., 1985; Green and Prout, 1985). In rats, increasing fractions of TCE are excreted unchanged in expired air at higher concentrations (Mitoma et al., 1985). The major metabolite excreted in urine is (conjugated or free) TCOH, with relevant species and strain differences in the quantitative fractions and in the concurrent amount of TCA (Dekant et al., 1984). The fraction of TCOH excretion also changed (reduced) from short-term compared to subchronic or chronic exposure (Green and Prout, 1985). Concentrations of DCA in the urine of rats were minimal after acute exposure to TCE (Chiu et al., 2006b). However, due to inhibition of its metabolism, the role of DCA after chronic exposure may change (Keys et al.,

2004) and is currently insufficiently assessed (Caldwell and Kesheva, 2006).

3.1.3 Biological monitoring

Biological monitoring of TCE by measuring TCA concentrations in the urine after shift is well established for a long time. The correlation has been reviewed by Monster and Zielhuis (1983). These authors provided a formula for TCA calculation. According to this formula, 10 ppm TCE (55 mg TCE/m³) in air (8 hrs daily) correspond to 20 mg TCA/l urine, and 50 ppm TCE (273 mg TCE/m³) correspond to 100 mg TCA/l urine (linear transformation). Alternatively, (unconjugated) TCOH in blood may be used. However, this method would be more invasive and is no longer in practical use. Because of the different half-lives, using the sum of TCA plus TCOH, as has been done in some earlier monitoring programmes, is not recommended (Lehnert and Greim, 2003, Henschler and Lehnert, 1983, 1986). Moreover, the ratio between TCOH and TCA apparently varies considerably between individuals. According to the data of a study by Green et al. (2004), this ratio was found to vary between 0.6 and 20.1 (Caldwell and Kesheva, 2006).

As a biomarker for renal toxicity in TCE-exposed persons the urinary excretion of α_1 -microglobulin has been proposed (Bolt et al., 2004) This effect biomarker would indicate slight impairments of the integrity of the kidney and is observed to be elevated in patients with renal cell cancer and a history of TCE exposure (Brüning et al., 1999). It is also increased in persons occupationally exposed to TCE without cancer (Green et al., 2004). In controls, urinary α_1 -microglobulin excretion is usually below 5 mg/l urine, whereas it may reach much higher concentrations in TCE-exposed persons. Green et al. (2004) reported α_1 -microglobulin excretion of 5.06 ± 4.84 mg/g creatinine in 70 TCE-exposed workers (range 0.5-252 ppm, mean 32 ppm) compared to 3.83 ± 1.85 mg/g creatinine in controls (n=54). However, according to Green et al. (2004), other indicators of nephrotoxicity, such as formic acid excretion, may be eventually more sensitive and may be discussed for monitoring in the future (see section "Repeated dose toxicity, human data" for further details).

3.2 Acute toxicity

3.2.1 Human data

TCE has been used as an anaesthetic with 5,000-20,000 ppm producing light anaesthesia in humans (Reynolds et al., 1989). Most studies in volunteers with controlled conditions showed no or only marginal CNS effects after single inhalation exposure to 300 ppm or below (Stewart et al., 1974; Vernon and Ferguson, 1969; Stopps and McLaughlin, 1969; Winneke et al., 1976; Ettema and Zielhuis, 1975; Windemuller and Ettema, 1978). In contrast, volunteers exposed to 90-130 ppm twice for four hours reported slight dizziness and eye irritation and performed badly in various psycho-physiological tests. A second group of workers, who were accustomed to TCE, was tested with similar results (Salvini et al., 1971). However, the study is poorly reported and the test persons have been aware of the exposure. Subjective signs of CNS depression (fatigue, decreased ability to concentrate) were reported after inhalation exposure of volunteers to 50 and 100 ppm TCE for six hours (Eitle et al., 1972). However, the focus of this study was on metabolism and the circumstances of exposure may have contributed to the observed effects. Nomiyama and Nomiyama (1977) reported irritation (see section "Irritation and corrosivity") and drowsiness at 27 ppm and above as well as headache at 81 ppm after single inhalation exposure to TCE for 2 or 4 hours. These effects have not been reported in other studies at considerably higher

6

concentrations. Hence, no conclusion may be drawn from the studies at these lower exposure concentrations (ECB, 2004).

Other acute effects like cardiac arrhythmias, hepatotoxicity and nephrotoxicity have occasionally been observed at higher concentrations (ECB, 2004). TCE decomposes in light and with heat or in contact with strong alkali to toxic products like phosgene and dichloroacetylene (Mertens, 1993; Saunders, 1967; Sax and Lewis, 1989). Hence, some of the reported effects, particularly those involving the trigeminal and optic nerves, may be linked to decomposition products (ECB, 2004).

Single oral intakes of about 20 ml (approximately 450 mg/kg body weight(bw), but possibly lower) are associated with CNS effects. Higher doses may lead to cardiac effects as well as liver and kidney toxicity (ECB, 2004).

3.2.2 Animal data

Lethal concentrations (LC₅₀) in rat are about 12,000 ppm (65,000 mg/m³) after exposure for 4 hours (Siegel et al., 1971). In mice, the LC₅₀ was 8,450 ppm (46,000 mg/m³) (Friberg et al., 1953). Main signs of toxicity were CNS depression including anaesthesia, respiratory failure as well as irritation of the eyes and the respiratory tract (Greim, 1996).

Hepatotoxicity, nephrotoxicity and cardiac sensitisation were observed after acute inhalation exposure of experimental animals. Pulmonary effects were seen at low concentrations after single inhalation exposure of mice, but not rats. In mice, vacuolisation of Clara cells was observed at exposure to 20 ppm (109 mg/m³) and above, accompanied by pyknosis of bronchiolar epithelium and focal loss of bronchiolar epithelium at higher concentrations (Odum et al., 1992). Toxicity in Clara cells of the mouse lung may be related to the accumulation of chloral. Mice have a restricted capability to convert this TCE metabolite (ECB, 2004). These observations, indicating the specific sensitivity of mice to pulmonary effects of TCE, were confirmed and substantiated by similar findings in other studies (Villaschi et al., 1991; Forkert et al., 1985; Forkert and Troughton, 1987; Forkert and Birch, 1989).

At high concentrations, behavioural and central nervous system effects were observed after acute inhalation exposure of rodents. Fatigue was increased, motor activities were reduced and T-maze behaviour was changed in rats after a single exposure for 6 hours to 800 ppm (4372 mg/m³), but not to 400 ppm (Grandjean, 1960 and 1963; Grandjean and Battig, 1964; Wolff, 1976). Shock avoidance behaviour in rats was affected at exposure to 250 ppm and above for 4 hours, with no NOAEL demonstrated in this study (Kishi et al., 1993). However, this experiment was poorly reported and is therefore of questionable significance for risk assessment (ECB, 2004).

Immunotoxicity studies in mice measured the response to an induced *Streptococcus* aerosol infection and the pulmonary bactericidal activity against inhaled *Klebsiella pneumoniae* after a single exposure to low concentrations of TCE. Changes in immunological responses were observed at inhalation exposure to 10 ppm or above (Aranyi et al., 1986). However, the toxicological significance of these findings is unclear as these assays are not validated (ECB, 2004).

The oral lethal dose (LD₅₀) for TCE ranges between 5,400 and 7,200 mg/kg bw in rats and is about 2,900 mg/kg bw in mice (ECB, 2004). CNS effects were noted as were lesions at necropsy (Jones et al., 1958).

Dermal LD50 have been reported to be greater than 29,000 mg/kg bw (occlusive dressing) in rabbits (Smyth et al., 1962, Smyth et al., 1969).

3.3 Irritation and corrosivity

3.3.1 Human data

The odour of TCE is detectable at 20 to 30 ppm (110-164 mg/m³) (ECB, 2004). An acceptable odour detection limit of 82 ppm (450 mg/m³) is provided by AIHA (1997). According to other sources, lower concentrations may already be relevant for odour detection. Thus, Abe (1988) stated 8.4 ppm (46 mg/m³) as odour threshold for TCE. A qualified odour recognition level of 108 ppm is documented in AIHA (1997).

Nomiyama and Nomiyama (1977) found irritation of mucous membranes at 27 ppm (148 mg/m³) and above after single inhalation exposure to TCE for 4 hours. These effects have not been reported in most other studies, even at considerably higher concentrations.

Also, Vandervort et al. (1973) mentioned eye Irritation and other symptoms after long-term exposures to 32-78 ppm (175-426 mg/m³) TCE. However, these data were poorly reported and not validated.

Stewart et al. (1970) determined dry throats and an "irritating" sensation (1 of 5 persons) after exposure to 100 or 200 ppm (546-1090 mg/m³) TCE.

TCE is irritating to human skin. Repeated dermal contact may cause de-greasing and lead to erythema and, in rare cases, to generalised exfoliative dermatitis (Irish, 1963; Schirren, 1971; Bauer and Rabens, 1974). TCE (quantity not given) was applied to the unoccluded skin of the forearm of a volunteer for 18 days. No effects on skin fold thickness or erythema were observed. However, the substance may have evaporated readily from the application site (Wahlberg, 1984).

3.3.2 Animal data

Skin

Undiluted TCE has produced severe skin irritation in several studies on rabbit skin (Duprat et al., 1976; Smyth et al., 1969). Undiluted TCE (0.1 ml), applied to unoccluded rabbit or guinea pig skin daily for 10 days resulted in erythema and oedema with evidence of fissuring and scaling, and increased skin fold thickness (Wahlberg, 1984). Severe skin irritation of TCE in alcohol was confirmed in other guinea pig strains (Anderson et al., 1986).

Eyes

The data on eye irritation are contradictory. In one study, the application of 0.1 ml of TCE into the rabbit eye produced mild to moderate conjunctivitis and limited keratosis with complete recovery (Duprat et al., 1976). In another study, the same amount caused necrosis of most of the cornea (Smyth et al., 1969).

3.4 Sensitisation

3.4.1 Human data

Some case studies report single positive results for skin sensitisation after TCE exposure (Nakayama et al., 1988; Conde-Salazar et al., 1983). TCE exposure is linked to autoimmune effects like *lupus erythematosus*, which in turn may exert skin erythema and other skin reactions (see section "Repeated dose toxicity").

No reports on respiratory sensitisation are available.

3.4.2 Animal data

A link to systemic autoimmune effects and hypersensitivity disorders was corroborated by recent publications (Kajima et al. 2007, 2008) In particular, Tang et al. (2008) has put forward the view that liver injury due to TCE was associated with hypersensitive skin reactions by TCE in the Guinea pig maximisation test.

3.5 Repeated dose toxicity

3.5.1 Human data

CNS effects

All existing studies with human volunteers or field studies on CNS effects following exposure to TCE include relevant uncertainties.

Stewart et al. (1970) exposed 5 male volunteers on 5 consecutive days (7 h/d) to TCE concentrations of 200 ppm (1090 mg/m³). A second group of 2 persons was exposed to 100 ppm (546 mg/m³; 4 hours, single exposure). The exposed subjects regarded the odour as "moderately strong" or "strong" at the beginning of the experiment but none of them could detect odour at the end of the day. At the beginning, 2/5 persons reported dry throats and 1 person classified the sensation as "irritating". Three out of five volunteers complained throughout the duration of the experiment about "feeling sleepy" when asked to perform certain tasks. Half of the persons reported that it required greater mental effort to perform a modified Romberg test. No objective changes of responses were observed in neurological tests (Stewart et al., 1970). Simon (1997) used pharmacokinetic modelling and Monte-Carlo simulation to extrapolate the results obtained by Stewart et al. to a more representative level. Modelling also included females, who had been regarded as more sensitive to the CNS effects after TCE exposure than men. The authors found that 99% of the females will be protected from CNS effects, if exposure is limited to 30 ppm (165 mg/m³).

In a later study by Stewart et al. (1974), a small number of male volunteers was observed for 4 weeks using exposure to TCE between 20 ppm (first week) and 200 ppm (fourth week) with different daily exposure durations. No signs of toxicity and no changes in behavioural test performance were observed. After exposure to 200 ppm (1090 mg/m³), some "minimal" changes in the EEG were found.

Rasmussen and co-workers (1993) examined 96 workers who were exposed either to TCE or to CFC113 during degreasing. No control group was included but the workers were grouped according to exposure history. The maximum concentration of TCA in urine was 26.1 mg/l, the mean was 7.7 mg/l. However, no historical urine levels and no air concentration data were available. Medical history was taken and several psychometric tests were performed. The prevalence of the "psycho-organic syndrome" was 10% for low exposure, 39% for mid exposure and 63% for high exposure. Most of the workers with a "psycho-organic syndrome"

had been exposed to TCE (31/42 predominantly, 7/42 exclusively) (Rasmussen et al., 1993). There is relevant uncertainty on the historical exposure of these workers, including possible peak exposure in the past. However, based on general Danish data for workplace exposure conditions, the usual average exposure in Denmark for such workplaces during the period 1947-1987 was assumed to be below 50 ppm (274 mg/m³) TCE in air (ECB, 2004).

In another study with occupational exposure of degreasers, the TWA values for TCE were 22-66 ppm (mean 38 ppm; 208 mg/m³) with short-term peaks of 77-370 ppm. Nine of 12 exposed workers with mean employment from 4.4 to 9.4 years were medically examined (9 control subjects). Seven of 9 exposed and one of the control persons reported symptoms (mainly fatigue, light headedness, sleepiness, eye irritation and shortness of breath). After three months with reduced exposure concentrations (mean 16 ppm; 88 mg/m³) and peaks up to 74 ppm (404 mg/m³), the number of reported symptoms was slightly reduced (Landrigan and Kominsky, 1987).

There is a large number of similar reports with some variability in results, which do not provide further clarifications on effect levels or thresholds for CNS effects (for review see Greim, 1996; ATSDR, 1997; ECB, 2004).

Kidney effects

In a cross-sectional study, 70 workers (58 males, 12 females) exposed to TCE were examined for possible renal dysfunction by Green et al. (2004). The mean exposure concentration was estimated to be 32 ppm (175 mg/m³; range 0.5-252 ppm) based on the urinary elimination of TCA. Average exposure duration was 4.1 years (1-20 years). Exposed workers had elevated N-acetylglucosaminidase (NAG) and albumin excretions, indicative of preclinical nephrotoxicity. However, NAG and albumin levels did not correlate with current urinary levels of TCA or years of employment. There was a trend for increasing urinary glutathione-S-transferase alpha activities with increasing urinary TCA concentrations. In addition, urinary formic acid and methylmalonic acid concentrations were elevated and correlated with TCA concentration. The authors questioned a causal relationship of the elevated NAG and albumin level with TCE exposure and further regarded NAG as an indication of functional changes in the renal tubules and not as an indicator of damage. However, they considered the observed effects as supportive for an influence of TCE exposure on vitamin B₁₂ deficiency, induced via the TCE metabolites TCA and TCOH. Vitamin B₁₂ deficiency leads to excess formic acid in urine and to excess methylmalonic acid. These acids could contribute to nephrotoxicity by cellular acidosis. No clinically relevant nephrotoxic effects were observed in this study.

In another study, 25 (of 29) Scandinavian workers were exposed to less than 6-10 ppm (33-55 mg/m³) TCE (Seiden et al., 1993). No increase in N-acetyl-D-glucosaminidase excretion was observed. Together with the slight subclinical effects reported in the study by Green et al. (2004), this report (which is rather limited in size and poor in reporting) points to a threshold for subtle preclinical kidney effects by TCE at or around this exposure concentration (6-10 ppm).

The relevance of renal toxicity as a critical endpoint for chronic exposure to TCE was confirmed in a recent case-control study of end-stage renal disease in aircraft workers, in which the risk was significantly elevated and correlated to TCE exposure (Radican et al., 2006). However, no details are available from this study to derive a more precise dose-response relationship.

Immunologic effects

A group of male workers "in the printing sector" with at least three years of exposure to TCE (group A) was examined for immunologic changes (Lavicoli et al., 2005). They were compared to an internal control group from the same factory (group B) and an external control group of office workers (group C). Group A exposed to TCE consisted of 35 persons, the control groups of 30 and 40 persons, respectively. The control groups were matched for age, smoking habits and (rural or urban) residence to the exposed group. Air concentrations of TCE were $35 \pm 14 \text{ mg/m}^3$ ($6.4 \pm 2.6 \text{ ppm}$). Urinary TCA was $13.3 \pm 5.9 \text{ mg/g}$ creatinine in group A and $0.02 \pm 0.02 \text{ mg/g}$ in group B. Means of immunologic parameters were significantly altered in the exposed group (group A) compared to both group B and group C with "type 1" cytokines raised (interleukin-4 (797.9 vs. 705.7 and 730), interferon-gamma (37.1 vs. 22.9 and 22.8)) and "type 2" cytokines lowered (interleukin-2 (3.9 vs. 8.1 and 8.1)). However, the study is of limited reporting quality (only means for the cytokine changes without standard deviation reported, no comment on exposure concentrations in the past).

3.5.2 Animal data

Inhalation

Sprague-Dawley rats, B6C3F1 mice and Swiss mice were exposed to 0, 100, 300 and 600 ppm (0, 546, 1640, 3280 mg/m^3) TCE for 104 weeks (rats) or 78 weeks (mice) (7 hours/day, 5 days/week). In this carcinogenicity study (see section "Carcinogenicity", below) non-cancer effects were only seen in male rats. Kidney tubular mega-nucleocytosis was observed at 300 ppm in 20% and at 600 ppm in 78% of male rats (Maltoni et al., 1986). The NOAEL for kidney toxicity in this study was 100 ppm. No kidney effects were observed in most other studies with repeated inhalation exposure or only at higher concentrations (Adams et al., 1951; Prendergast et al., 1967; Arai et al., 1988; Fonzi et al., 1967). Increased kidney weights were found in one study in mice at 75 ppm (NOAEL 37 ppm) (Kjellstrand et al., 1981, 1983a, b). The relevance of these changes is uncertain, as effects are regarded as possibly adaptive and no histopathology has been performed (ECB, 2004).

Concentration-dependent liver weight changes were seen in the same study after inhalation exposure of NMRI mice to concentration between 37 and 3,600 ppm (202-20,220 mg/m^3) TCE for 30 or 120 days. The weight changes were accompanied by changes in the size of the hepatocytes and increased vacuolisation of the cytoplasm (Kjellstrand et al., 1981, 1983a,b). Again, the relevance of these findings is uncertain and is regarded as a possible adaptive response. Mice were more sensitive to liver effects than other species (ECB, 2004). Adverse effects in rat liver occurred at similar or higher concentrations than did kidney effects (Fonzi et al., 1967; Arai et al., 1988; Adams et al., 1951).

Neurotoxicity was examined in F344 rats in a 13-week study in compliance with GLP. Rats were exposed to 0, 250, 800 and 2500 ppm (0, 1366, 4370, 13660 mg/m^3 ; 7 h/d, 5 d/w). Neurotoxicity was evaluated by weekly clinical observations, monthly functional observational battery (FOB), post-exposure testing of evoked potential (visual and auditory chemosensory systems), other tests on trigeminal effects and neuro-histopathology. Lacrimation occurred occasionally at 800 ppm and 2500 ppm. No clearly concentration-related effects were seen in the FOB. Some changes in the visual and auditory somatosensory systems were observed at 800 ppm and 2500 ppm for the visual system and at 2500 ppm at the auditory system. No trigeminal effects were observed and histopathological findings were limited to the 2500 ppm group (focal loss of hair cells in the cochlea) (Dow Chemical, 1993). From this study, a NOAEL of 250 ppm (1366 mg/m^3) can be derived.

A few other neurotoxicological studies with repeated inhalation exposure provided conflicting results. Reduced avoidance behaviour was reported after exposure of rats to 125 ppm (680 mg/m³) TCE for three weeks (Grandjean and Battig, 1964; Goldberg et al., 1964a, b). Increased activity was shown after 5 days exposure of rats to 200 ppm (1090 mg/m³) (Savolainen et al., 1977). However, these studies may have been influenced by the odour of TCE and are less qualified in reporting than the above cited Dow Chemical (1993) study. Mongolian gerbils showed differences in behaviour in the maze test after 71 or 106 days of exposure to 150 ppm (820 mg/m³) TCE. Non-significant changes were still apparent after a recovery period (Kjellstrand et al., 1981). Kyrklund et al. (1983, 1986) also observed minor changes in brain lipid composition in gerbils at 50 ppm (273 mg/m³) exposure for 12 months and in Sprague-Dawley rats at 320 ppm (1750 mg/m³) after 5 days. The relevance of these findings is uncertain and the study results are not used for risk assessment.

Arito et al. (1994) exposed rats to 0, 50, 100 or 300 ppm (0, 270, 546, 1640 mg/m³) TCE (8 h/d) for 6 weeks. They found changes in CNS function at and above 100 ppm, where the circadian heart rhythm was disrupted in a dose-related manner. The NOAEC in this study would be 50 ppm (270 mg/m³). However, the biological significance of these effects is not clear (ECB, 2004).

Ototoxic effects were observed in rats and mice at higher concentrations (for review see ECB, 2004).

Pulmonary toxicity was seen in mice at the only tested concentration of 450 ppm (2460 mg/m³) (subacute duration) with a regenerative process starting after the first days of repeated exposure (Odum et al., 1992).

Oral

Similarly to inhalation, kidney toxicity in repeated studies with rats is the most critical effect observed in experimental animals. In a carcinogenicity bioassay, rats received 0, 50 or 250 mg/kg • d by gavage on 4 or 5 days/week for 52 weeks with observation until natural death. 47% of the males showed kidney tubular mega-nucleocytosis at 250 mg/kg • d. No effects occurred in females and the NOAEL for both sexes was 50 mg/kg • d (Maltoni et al., 1986). Nephrotoxicity was also observed in the NTP studies with rats and mice (NTP, 1988; NTP, 1990).

Liver toxicity was observed in mice and rats with more distinct effects in mice. Elcombe et al. (1985) administered TCE in corn oil to male Alderly Park and Osborne-Mendel rats as well as to B6C3F1 and to Alderley Park mice. Doses were 500, 1000 and 1500 mg/kg • d for 10 days. Marked liver weight increases were seen in mice and, to a lesser extent, in rats. DNA synthesis was extremely increased in mice (500 % of control values) but not in rats. Hepatomegaly in mice was attributed to hypertrophy and hyperplasia, whereas only cell enlargement was observed in the rat liver. These changes occurred at all three dose levels without a clear dose-response relationship. Only in mice, a concurrent increase of hepatic peroxisomal enzyme activity was observed. This species difference in peroxisome proliferation is thought to be the result of a different rate of TCA formation in mice vs. rats, which increases hepatic peroxisomal β -oxidation (Elcombe, 1985).

To investigate possible autoimmune effects caused by TCE, MRL+/+ mice were exposed to 0, 0.1, 0.5 and 2.5 mg TCE/ml (21, 100 and 400 mg TCE/kg • d) in drinking water for 4 and 32 weeks (Griffin et al., 2000). After 32 weeks of treatment, there was a significant increase in hepatic mononuclear infiltration localised to the portal region, a type of hepatic infiltration

consistent with autoimmune hepatitis at and above 100 mg/kg • d. Changes were not significantly different from control at 21 mg/kg • d. TCE exposure activated CD4⁺ T-cells after 32 weeks. There were 11, 61, 156% increases in lymph node CD4⁺ T-cells. Interferon-gamma secreting CD4⁺ T-cells are involved in the development of autoimmune disease pathology in a similar mouse strain. Therefore, interferon-gamma secretion from CD4⁺ T-cells isolated after 4 or 32 weeks exposure was measured with a significant increase above control for CD4⁺ T-cells from animals exposed to 100 mg/kg • d (no significant effect for animals treated with 21 mg TCE/kg • d). In a more recent study of the same group, it was shown that these effects were induced by the metabolites chloral hydrate and TCA as indicated by similar responses at similar doses in *in vivo* testing. Moreover, the CD4⁺ T-cells showed a decreased susceptibility to the activation-induced cell death form of apoptosis. This kind of defect has been linked with the development of several idiopathic autoimmune diseases such as lupus nephritis, multiple sclerosis, autoimmune haemolytic anaemia and arthritis in both humans and mice (Blossom et al., 2004).

Dermal

No studies are available with repeated dermal exposure of experimental animals to TCE.

3.6 Genotoxicity

3.6.1 In vitro

From earlier studies it was concluded that pure TCE usually did not induce gene mutations or DNA damage in prokaryotic systems. Also, TCE did not induce gene conversion or reverse mutations in *Saccharomyces cerevisiae* (with and without metabolic activation) or mitotic crossing over in *Aspergillus nidulans*, but it did induce forward mutations in *Aspergillus nidulans* (NTP, 2000).

The EU Risk Assessment Report (ECB, 2004), based on a positive Ames test (Crebelli et al. 1982) and a positive mouse lymphoma test (NTP, 1988) concluded that trichloroethylene was an *in vitro* mutagen.

According to more recent data, no chromosomal aberrations were found in a Chinese hamster lung cell line with or without S9 (Matsuoka et al., 1996). However, a significant and dose-dependent increase in the frequency of DNA single-strand breaks and alkali-labile sites, as measured by the Comet assay, and in micronuclei frequency, was obtained in primary kidney cells from both male rats and humans of both sexes. The test concentration of TCE was between 1 and 4 mM (Robbiano et al., 2004). However, the viability of the cells was clearly compromised at the high concentrations that were tested.

Zefferino et al. (2005) investigated changes in gap junction intercellular communication (GJIC) in serum-free cultured primary human keratinocytes. GJIC was significantly inhibited with 500 µM TCE. According to the authors, this points to a tumour promoting potential of TCE.

3.6.2 In vivo - Human data

Results on genotoxic effects after human exposure are contradictory. Higher rates of sister-chromatid exchanges (SCE) in peripheral blood lymphocytes have been observed in a small study with 6 exposed workers (Gu et al., 1981). Also, Seiji et al. (1990) reported increased SCE for male smoking workers exposed to 10-50 ppm (55 - 270 mg/m³) TCE, but not for exposed non-smoking males and for females. Nagaya et al. (1989) saw no increase of SCE

after inhalation exposure to about 30 ppm (164 mg/m³) TCE in another study with small sample sizes.

Rasmussen et al. (1988) found chromosomal aberrations (breaks, translocations, inversions, deletions and gaps) in a group of 15 TCE-exposed workers. Konietzko et al. (1978) described increased levels of leukocyte aneuploidy (hypodiploid cells) in degreasing workers occupationally exposed to TCE. All the reported studies have relevant limitations in the study design not permitting firm conclusions on the genotoxicity of TCE in humans.

Workers occupationally exposed to high concentrations of TCE with kidney tumours are suspected of exhibiting mutations of the von-Hippel-Lindau (VHL) tumour suppressor gene (Brauch et al., 1999, 2004). In an initial study, all of 23 patients with renal cell carcinoma and previous exposure to TCE showed this mutation (Brüning et al., 1997). In a second study, these mutations of the VHL gene were observed in 75% of renal cell carcinoma from 44 TCE-exposed persons. The exposure concentration was positively correlated with the number of mutations in each patient (Brauch et al., 1999). This was confirmed in a subsequent study on 17 TCE-exposed and 21 non-exposed patients with renal cell cancer (Brauch et al., 2004). It is being debated whether the VHL mutations result from a direct genotoxic effect of TCE metabolites or secondary to continuous toxic injury and sustained cell proliferation (Mally et al. 2006).

3.6.3 In vivo - Animal data

In earlier studies, TCE gave equivocal results for sex-linked recessive lethal mutations in *Drosophila melanogaster* exposed via feed (NTP, 2000). TCE did not induce mitotic recombination in *Drosophila melanogaster* exposed via inhalation (Vogel and Nivard, 1993).

Based on the review by IARC (1995), TCE administered orally or by intraperitoneal injection gave equivocal results with respect to covalent binding to mouse and rat liver DNA and negative results for binding to mouse spleen, pancreas, lung, testis, kidney or brain DNA. When administered orally or by inhalation, the substance did not induce unscheduled DNA synthesis (UDS) in mouse hepatocytes, SCE in mouse splenocytes or rat lymphocytes. TCE did not induce micronuclei in bone marrow when administered i.p., or in mouse splenocytes, mouse spermatocytes or rat lymphocytes when administered by inhalation. TCE gave both negative and positive results for DNA single-strand breaks or alkali-labile sites in mouse liver (administered i.p. or orally) and positive results for micronucleated polychromatic erythrocytes in mice exposed orally and in rats exposed by inhalation.

A more recent, appropriately designed micronucleus test on TCE in rat bone marrow was negative (Wilmer et al., 2005), thus reducing the weight of earlier positive results (Kligerman et al., 1994).

Tao et al. (1999) exposed mice to 1000 mg/kg • d TCE by gavage for 5 days/week for up to 33 days. TCE decreased methylation of the total DNA and modified the expression of early proto-oncogenes. No UDS was induced in hepatocytes of mice exposed orally (Miyagawa et al., 1995). No base-change or small-deletion mutations were observed in various tissues (including kidney, liver, lung and testicular cells) of *IacZ* transgenic mice exposed to 203 ppm (1110 mg/m³) TCE or above by inhalation for 12 days (Douglas et al., 1999).

3.6.4 Genotoxicity of TCE metabolites

Chloral and chloral hydrate

Chloral hydrate is a well-established aneuploidogenic agent that also has some mutagenic activity. *In vivo*, it clearly induced aneuploidy and micronuclei in mammals, whereas other tests produced conflicting results. When incubated with calf thymus DNA, chloral hydrate induced the formation of DNA adducts (IARC, 2004). Chloral hydrate is regarded as a low-potency mutagen, with most of the positive results having occurred only at high doses (Moore and Harrington-Brock, 2000).

Trichloroethanol

The genotoxic potential of TCOH is insufficiently assessed, with negative results in the *Salmonella* mutagenicity assay (Moore and Harrington-Brock, 2000).

Trichloroacetic acid

Trichloroacetic acid caused no mutations in bacteria and no changes in SOS repair. In human cells *in vitro*, it did not induce chromosomal aberrations or DNA strand breaks. However, it was mutagenic in single studies on cultured rodent cells. The substance inhibited intercellular communication.

Studies on DNA adducts, DNA strand breaks and micronuclei *in vivo* gave conflicting results. Trichloroacetic acid induced abnormal sperm in mice and chromosomal aberrations in mouse and chicken bone marrow. It also induced micronuclei in newt salamander (*Triturus*) larvae.

Trichloroacetic acid stimulated cell replication in acute studies (and depressed cell replication in chronic studies). This was correlated with decreased methylation of the promoter regions of proto-oncogenes and increased expression of these genes (IARC, 2004).

Dichloroacetic acid

Tests on genotoxicity *in vitro* produced conflicting results. *In vivo*, DCA caused mutations in male transgenic mice harbouring the bacterial *lacI* gene. The substance led to DNA damage in peripheral blood cells in the Comet assay. Exposure of mice also resulted in micronuclei of polychromatic erythrocytes but not in rat bone marrow cells. Tests for the induction of DNA strand breaks and DNA binding assays in mouse liver were inconclusive.

Dichloroacetic acid caused a decrease of 5-methylcytosine in DNA of mouse liver cells. It affects cell proliferation and cell death in normal livers and tumours in mice. It causes DNA hypo-methylation (IARC, 2004).

Monochloroacetic acid

Monochloroacetic acid is a mutagen in *Salmonella typhimurium* strains, but only at a low potency (Kargalioglu et al., 2002).

S-1,2-Dichlorovinylcysteine and S-(1,2-dichlorovinyl)glutathione

DCVC and S-(1,2-dichlorovinyl)-glutathione induced point mutations in bacteria. There is some indication, that DCVC induces primary DNA damage in renal tubular cells *in vitro* and *in vivo*. The substance did not induce micronuclei in a Syrian hamster embryo fibroblast system and gave a weak UDS response. It induced the expression of two proto-oncogenes. The genotoxic potency of DCVC and dichlorovinyl-glutathione is currently unknown. However, from the results in the *Salmonella* assay, it may be assumed that DCVC has a

much stronger mutagenic activity compared to dichlorovinyl-glutathione, of which the former is a metabolite (Moore and Harrington-Brock, 2000).

DCVC may react with DNA. However, DNA adducts may not be formed or may not be stable *in vivo* (Volke and Dekant, 1998; Müller et al., 1998).

A negative result was found in an *ex vivo* Comet assay in rats, who had received up to 10 mg/kg DCVC (single oral dose). Preparations of kidney proximal tubular cells showed no changes in tail length compared to control (CTL 1998).

Gene expression in human renal proximal tubular cells exposed to low (subtoxic) concentrations of DCVC was altered possibly indicating apoptosis, stress response cell proliferation and repair (Lock et al., 2006).

3.6.5 Germ cells

Two positive tests on germ cell mutagenicity have been published, which included *i.p.* administration of high doses of TCE (Fahrig, 1977 and Schiestl et al., 1997). A mouse spot test with intraperitoneal application of 140 or 350 mg/kg TCE was weakly positive (Fahrig, 1977). Also, in a modified mouse spot test with a single intraperitoneal application of 200 mg/kg TCE to mice post conception induced increased incidences of black spots in the offspring compared to controls at a high level of concurrent embryotoxicity (Schiestl et al., 1997).

In vivo tests for chromosomal aberrations in bone marrow or germ cells were negative as well as UDS tests in the liver of rats and mice and mutagenicity tests in various organs of transgenic mice (Douglas et al., 1999; Brüning and Bolt, 2000). Also, additional tests on aneuploidy were negative (see section "Genotoxicity - *in vivo* - animal data").

3.7 Carcinogenicity

3.7.1 Human data

Many epidemiological studies have been performed to assess the potential carcinogenicity of TCE. However, results are often confounded by exposure to mixed solvents or other risk factors. A number of reviews have been published covering most of the cohort, case-control and community-based studies on TCE (Wartenberg et al., 2000; ECB, 2004; Wong, 2004; Scott and Chiu, 2006; Mandel et al., 2006; Alexander et al., 2006). From these reviews and additional more recent studies, it may be concluded that evidence for carcinogenicity by TCE is mainly to be discussed for liver tumours, renal cell carcinoma and non-Hodgkin's lymphoma (NHL). There have been other tumour sites discussed in relation to TCE exposure, but positive results were infrequent and not consistent in these cases. These are not covered below.

The cohort study by Anttila et al. (1995) included 3,089 exposed workers. The urinary excretion of TCA and the latency period (time from first urine samples to death or end of study) were used in the response assessment. Total cancer mortality was not increased in this study (SIR of 1.0; C.I. 0.8-1.2) and total cancer incidence (SIR 1.1 C.I. 0.9-1.2) was only slightly and insignificantly increased compared to the general population in Finland. There was a significant increase for liver cancer in male workers and a latency period of more than 20 years (SIR 13.0, C.I. 2.68-37.9). For kidney cancer, there was no increase, and for NHL the increase was not significant (SIR 1.81; C.I. 0.78-3.56). The authors stated that exposure was usually below 30 ppm (164 mg/m³ TWA). An average exposure of 6.5 ppm was assumed

in a recent assessment (UAIII, 2006).

Another cohort study by Axelson et al. (1994) addressed 1727 workers in Sweden, whose urinary levels of TCA were available from biological monitoring programmes. The standard incidence rates (total cancer mortality, total cancer incidence) were not elevated. For liver cancer, the SIR was 1.4 (C.I. 0.6-3.6), for kidney cancer 1.2 (C.I. 0.5-2.5) and for NHL 1.52 (C.I. 0.49-3.54). Elimination of TCA was usually below 50 mg/I and associated with an average air concentration of about 15 ppm TCE (82 mg/m³). Only few persons were included with higher workplace exposure. This study was a follow-up of an earlier study published by Axelson et al. (1978).

Similarly, the studies by Spirtas et al. (1991) and Blair et al. (1998) on 7204 workers of an aircraft maintenance facility in Utah (USA) provided no evidence of a significant increase for total cancer. Cancers of the liver and kidney as well as NHL were increased insignificantly. There was no appropriate monitoring of TCE exposure in this study (ECB, 2004). Similarly, a large study by Morgan et al. (1998) with 4733 exposed workers revealed only an insignificantly elevated risk for kidney cancer. However, exposure was insufficiently addressed and quantified (ECB, 2004). In another large cohort study in California, the assessment was based on 2267 exposed workers. For those with exposure for more than 5 years, there was an insignificant increase in NHL (Boice et al., 1999).

Henschler et al. (1995) studied 169 male workers who were exposed between 1956 and 1975 for at least 1 year to TCE in the area of Arnsberg/Germany (characterised by metal industry where TCE was used for degreasing). Concentrations of TCE in air were not precisely quantified but episodes of very high exposures were assumed from the reported symptoms. Typical exposure concentrations were estimated to be more than 100 ppm (55 mg/m³), often at or above 500 ppm (2730 mg/m³) TCE. The standard incidence rate for kidney tumours was significantly increased (SIR 8.0; C.I. 3.4-18.6) and the SMR was insignificantly elevated (3.3; C.I. 0.9-11.8). Furthermore, risks for lung tumours and lympho-haematopoetic tumours were insignificantly elevated (no incidence or mortality rate for NHL was described). The study was possibly compromised by a pre-existing cluster of 4 kidney tumours (which were indeed the initial cause of the study project) and was criticised because of discrepancy to earlier studies (Weiss, 1996; McLaughlin and Blot, 1997). Therefore based on the cohort study's results (Henschler et al., 1995), a case-control was supplemented with patients from a local hospital from the same area. It consisted of 58 patients who had been diagnosed with kidney cancer based on nephrectomy results. The odds ratio was 10.8 (CA. 3.36; 34.7). Some confounding factors (e.g. age of control group, other potential selection bias of control) were discussed but should not have had a decisive influence on the outcome of this study (Vamvakas et al., 1998).

Later, Brüning et al. (2003) provided a third consecutive study (case-control) for the area of Arnsberg/Germany. Cases with renal cell carcinoma (n=134) were compared with 401 controls from hospital and nursing homes. Exposure was assessed by job titles. The odds ratio was significantly elevated (OR 2.5; C.I. 1.4-4.5) for the description "if ever worked with TCE" and increased to 2.7 (C.I. 0.8-8.9) if exposure was for 20 years or more. However, the latter was no longer statistically significant. Thirteen of 44 cases with TCE exposure were carriers of the VHL 454 T allele (mutation of a tumour suppressor gene), whereas none of 107 non-exposed cases carried this mutation.

A small study was performed by Hansen et al. (2001) with a workforce size of 803 persons. Like the other Scandinavian studies, elimination of TCA was used for exposure quantification, the latter being assessed as rather low (mean 101 mg TCE/m³). For cancers of

the liver and the biliary passages, an insignificantly elevated risk (SIR 2.6; C.I. 0.8-6.9) was calculated. For NHL in men, this study indicated a significantly elevated risk (SIR 3.5; C.I. 1.5-6.90).

Raaschou-Nielsen et al. (2003) provided a large cohort study with 14,360 workers from Denmark. The workers, mainly from small- and medium-sized enterprises, were presumably exposed to higher concentrations of TCE. With regard to NHL (SIR 1.5 (C.I. 1.2-2.0) and to renal cell carcinoma (SIR 1.4; C.I. 1.0-1.8), the cancer risk was significantly or nearly significantly increased. There was no clear link between the SIR for NHL and the lag time, duration of employment, year of first employment or numbers of employers in the company. Renal cell carcinoma increased with increasing lag time and with duration of employment. Furthermore, the risk for this type of tumour was clearly significant if the year of first employment was before 1970 (SIR 1.9; C.I. 1.4-2.6) compared to later years of first employment (SIR 0.7; C.I. 0.4-1.2). The study found elevated SIR for cancer of the liver and biliary passages for women but not for men. However, the lower SIR with increasing duration of employment does not support a causal relationship with TCE exposure.

A case-control study in the Arve valley in France (with a prevalence of metal industry that used TCE for degreasing) included 86 renal cell cancer cases and 316 matched controls (Charbotel et al., 2006). Exposure was quantified by job descriptions and a transformation into exposure bands (Fevotte et al., 2006). After adjustment for tobacco smoking and body mass Index, a significantly increased risk was identified for high cumulative doses (OR= 2.16; CA. 1.02-4.6). A dose-response relationship was shown as was a peak effect. The adjusted OR for the highest class of exposure plus peak was 2.73 (C.I. 1.06-7.07). The study population was regarded as highly exposed with 13.2 % of exposure levels > 50 ppm (270 mg/m³) and 7.5% of exposed jobs having peaks above 200 ppm (1090 mg/m) (Fevotte et al., 2006; Charbotel et al., 2006).

Further studies were performed with TCE in the groundwater and sometimes in the drinking water. In a recent integrated assessment of these studies, Wong (2004) did not find an increased cancer risk, specifically for liver cancer or NHL, from those and the epidemiological studies cited above.

An earlier meta-analysis by IARC (1995) commented that the most informative cohort studies consistently indicated an excess relative risk for cancer of the liver and biliary tract, with a total of 23 observed cases versus 12.87 expected.

Another meta-analysis by Scott and Chiu (2006) has been performed to assess the possibility of an elevated risk of NHL and workplace exposure to TCE. This meta-analysis included most of the cohorts reported above supplemented with a few studies of less quality and a number of case-control studies. The cohort studies for those cohorts for which information TCE exposure was available resulted in a summary relative risk estimate (SRRE) of 1.29 (C.I. 1-1.66). For the seven subcohorts that had a specific exposure to TCE the SRRE was 1.59 (C.I. 1.21-2.08). The significantly elevated risk was driven by European studies (Hansen et al., Raaschou-Nielsen et al., Axelson et al., Anttila et al.), with multiple industry exposures combined, whereas for the U.S. studies with single industry cohorts (Blair et al., Boice et al., Morgan et al.) the risk was only insignificantly elevated. A more detailed analysis of a possible correlation with TCE exposure concentration and/or exposure duration did not demonstrate such a dose-response relationship. Studies with less qualified exposure description and case-control studies showed an insignificant increase in cancer risk when the combined analysis was performed (Mandel et al., 2006). Scott and Chiu (2006) pointed out that the four studies from the Nordic countries (Anttila et al., Axelson et al., Hansen et al.,

Raaschou-Nielsen et al.) all classified NHL identically and all reported consistent findings, whereas other versions of the International Classification of Diseases (ICD) system were used in other studies with sometimes conflicting results. A confounding factor for an appropriate meta-analysis may also have been that the understanding of histopathological and immunological characteristics of lymphoma has changed during the last decades. This leads to problems in the aggregation of earlier and current NHL cases (Scott and Chiu, 2006).

3.7.2 Animal data

Inhalation studies on the carcinogenicity of TCE are available for rats, mice and hamsters (Maltoni et al., 1988; Henschler et al., 1980; Fukuda et al., 1983).

One inhalation study showed an increased incidence of lymphomas in mice (Henschler et al., 1980), one study showed increased incidences of liver tumours in mice (Maltoni et al., 1988) and three studies showed increased incidences of lung tumours (Maltoni et al., 1988; Fukuda et al., 1983). Lung tumours were found in female B6C3F1 mice, in male Swiss mice and in female ICR mice. One of three experiments with rats showed an increased incidence of interstitial testicular tumours and a marginal increase in renal cell tumours in males (Maltoni et al., 1988). No increased tumour incidence was observed in one study in hamsters (IARC, 1995).

A slight increase of renal cell tumour incidence was observed in male rats, if aggregated inhalation data are considered (Lock and Reed, 2006).

TCE (with and without stabilisers) was also tested for carcinogenicity by oral exposure. Studies in mice showed significant increases in benign and malign liver tumours (NCI, 1976; NTP, 1990). In two studies, the incidence of uncommon renal cell tumours was significantly increased in male rats (NTP, 1988; NTP, 1990) and in one study an increased incidence of interstitial-cell testicular tumours (NTP, 1988) was observed (IARC, 1995). Kidney tumours were induced in three rat strains: Sprague-Dawley, Fischer-344 and Osborn-Mendel. These effects were consistently only seen in male animals and not in mice. Non-neoplastic nephrotoxicity was found in animals that developed tumours.

In summary, some data point to the possibility of a connection between human TCE exposure and NHL, but the available evidence is not convincing at the present time.

3.7.3 Carcinogenicity of metabolites

There are no human data on the carcinogenicity of single major metabolites of TCE available. In experimental animals, chloral hydrate increased the incidence of adenomas in the pituitary gland of female mice after oral application. In dietary restricted mice, there was an increased trend for hepatocellular carcinoma in male animals. Two other oral studies did not show carcinogenic activity. The overall assessment was "*limited evidence for carcinogenicity*" of chloral hydrate (IARC, 2004).

In experimental animals, DCA was tested in several studies. Neutralised DCA, administered in the drinking water to mice of both sexes, increased the incidences of hepatocellular adenomas and carcinomas. The substance was also active in rats, however, with a clear sublinear dose-response relationship (DeAngelo et al., 1996). The substance promoted hepatocellular carcinomas in carcinogen-initiated mice. The overall assessment was "*sufficient evidence for carcinogenicity*" of DCA (IARC, 2004).

In experimental animals, TCA was tested in several studies. Neutralised TCA, administered in the drinking water to mice of both sexes, increased the incidences of hepatocellular adenomas and carcinomas. However, there is one study in which the occurrence of tumours was not influenced in male mice. The substance promoted hepatocellular adenomas and/or carcinomas in carcinogen-initiated mice (both sexes) and of kidney tumours in male mice. The overall assessment was "*limited evidence for carcinogenicity*" of TCA (IARC, 2004).

In a recent subchronic gavage study with Eker rats, which are very susceptible to renal cell carcinoma, administered the TCE metabolite dichlorovinylcysteine no neoplastic or preneoplastic changes were observed (Mally et al., 2006).

There are no adequate long-term carcinogenicity studies available for other metabolites of TCE.

3.7.4 Mode of action for carcinogenic effects

Liver tumours

Mice are generally regarded as a sensitive species for liver tumours. B6C3F1 mice are known to exhibit such tumours especially after exposure to hydrocarbon solvents. In the case of TCE, it has been discussed that the high rate of TCA may lead to peroxisomal proliferation in mouse liver *via* the peroxisome proliferators-activated receptor α (PPAR α). This mechanism is supported by recent studies with wild-type and PPAR α -knock-out mice (Luaghter et al., 2004). The respective PPAR α receptors are only found to a minor degree in humans (Smith et al., 2005).

In humans, conflicting results regarding liver tumours were observed in epidemiological studies. Cohort and case-control studies provided some evidence of the relevance of liver tumours after TCE exposure (see section "Carcinogenicity, human data"; Wartenberg et al., 2000). In a more recent combined assessment (liver and biliary passage cancers), the overall incidence of mortality from these cancers was only slightly and insignificantly elevated. However, in those few studies in which liver cancer was assessed separately from biliary cancer, the risk appears more elevated (Scott and Chiu, 2006). In terms of mechanism it is assumed that, if this tumour location is relevant in humans at all, liver tumours would be induced by a different mode of action in humans compared to mice.

However, Keshava and Caldwell (2006) reported a number of differences in gene expression between the response to typical peroxisomal proliferators and the one observed for TCE or TCA. Liver tumours after exposure to TCE could also be induced (in parts) by DCA. DCA was found to be a hepato-carcinogen in mice and rats. Bull et al. (2002) compared biomarkers from TCA, DCA and TCE-induced tumours, in order to identify the metabolite responsible for liver tumours by looking at the antibody profile and/or the mutational profile. The data were not consistent with the hypothesis that all liver tumours induced by TCE were in fact caused by TCA. DCA induces peroxisomal proliferation in higher doses than the doses associated with liver cancer (Bull, 2004; Walgren et al., 2004). Caldwell and Keshava (2006) noted a variety of effects by DCA consistent with conditions that increase liver cancer risk across species. Recently, DCA has been discussed as the critical metabolite of TCE possibly responsible for the carcinogenic action. DCA may interact with DNA (see section "Genotoxicity"), possibly induces suppression of apoptosis, and affects the lipid and glycogen metabolism, which may be a mode of action for the observed liver tumours induced by TCE (Caldwell and Keshava, 2006). However, very low levels of this substance were found in only some of the highly exposed humans (Fisher et al., 1998) and results from rat

studies support a sublinear dose-response relationship after oral exposure (DeAngelo et al., 1996). But due to the suicide metabolism of DCA the possible participation of this substance in toxicodynamics of TCE in humans may currently not be excluded (Keys et al., 2004).

Kidney tumours

Several modes of action have been discussed for the development of renal cell tumours after TCE exposure:

1) Direct interaction with DNA

There is little evidence that TCE acts primarily *via* a direct genotoxic mechanism. Most classic tests for mutagenicity were negative and DNA-binding, if it was noted, was weak or unstable (Lock and Reed, 2006).

2) Indirect interaction with DNA

Some authors propose that DNA damage from TCE is produced via reactive oxygen species, leading to lipid peroxidation and - at least in the liver of rodents - to peroxisome proliferation, which is regarded as an important mechanism for carcinogenicity. However, this mechanism may well be relevant for the liver, but probably not for the kidney (Lock and Reed, 2006).

Lash et al. (2005) performed studies with human proximal tubular cells of the kidney. They exposed the cells to dichlorovinyl-cysteine, a metabolite of TCE discussed as being responsible for nephrotoxicity and carcinogenicity. Cellular necrosis occurred only at high concentrations but relevant changes in the expression of proteins regulating apoptosis, cell growth, differentiation and stress response were seen at much lower concentrations of dichlorovinyl-cysteine and after shorter duration *in vitro*. The authors discussed that these epigenetic events may relevantly contribute to TCE kidney tumour formation.

3) Hyaline droplet formation

Male rats excrete high amounts of low molecular weight protein, the alpha-2 μ -globulin. Some chemicals bind to this protein leading to accumulation of the protein-chemical complex as hyaline droplets, which in turn produces renal tubular hyperplasia, nephrotoxicity and renal cell cancer. This mode of action is regarded as not being relevant for humans. Because of the male rat's sensitivity to TCE-induced renal cancer this mechanism has basically to be considered. However, no hyaline droplets were found after TCE exposure in male rats (Goldsworthy et al., 1988), and therefore this mechanism is not considered as relevant for TCE-induced tumour formation in the kidney.

4) Exaggeration of spontaneous chronic progressive nephropathy

In principle, chronic progressive nephropathy could be a mechanism of tumour formation. Cell proliferation is linked to errors of DNA replication, and this results in a greater opportunity for the fixation of a mutational event as an initial state of a possible tumour. Green et al. (1998) demonstrated that rats exposed to TCE excrete elevated amounts of formic acid. This intermediate is formed *via* the oxidative pathway by the interaction of TCOH and/or trichloroacetic acid with the vitamin B₁₂-dependent C₁ metabolism (see section "Toxicokinetics"; Dow and Green, 2000). Formic acid is nephrotoxic by induction of cellular acidosis and is already elevated in the urine of rats after subacute exposure to 250 to 500 ppm (1,365-2,730 mg/m³) (Green et al., 1998). Mice eliminate much less formic acid than

rats. This could explain the differences in sensitivity between rats and mice with regard to nephrotoxicity and also to secondary carcinogenesis *via* this tumour-promoting mechanism. However, after chronic intake of high amounts TCOH via drinking water only a moderate increase in renal cell turnover could be demonstrated which was reversible (Green et al., 2003). On the other hand, inhalation exposure of workers already to low concentrations of TCE apparently leads to disturbances of vitamin B₁₂ metabolism, elevated formate excretion and first indications of renal injury (Green et al., 2004).

Also, in a recent study by Mally et al. (2006) with subchronic gavage of the TCE metabolite dichlorovinylcysteine to susceptible rats the authors did not find indications for a genotoxic event but only increased cell proliferation. It was suggested that renal cell cancer after TCE exposure was a consequence of nephrotoxicity and resulting regenerative cell proliferation.

5) Conjugation with glutathione and enzymatic activation to reactive species

The understanding of this proposed mode of action is that the metabolism of TCE *via* the reductive glutathione-dependent pathway leads to nephrotoxic and genotoxic metabolites. Both events in combination are considered responsible for the local carcinogenic effects in the kidney.

For the genotoxic event it is further postulated that this could be a mutation of the VHL gene. The VHL gene damage was often observed in kidney cancer patients exposed to TCE. Subsequent to the damage of this tumour suppressor gene, cell proliferation and renal cell carcinoma may develop.

Principally, identical metabolites were found in humans as in rodents pointing to a human relevance of the tumours observed in animal studies. Moreover, this pathway is less important at lower and more relevant at higher exposure concentrations of TCE, when oxidative metabolism is saturated (Goeptar et al., 1995). There are some contradictions, as S-1,2-dichlorovinyl-glutathione is generated to a larger extent in mice compared to rats, but rats and not mice show increased incidences of kidney cancer. This could be due to the much higher β -lyase activity in rats compared to mice (Green et al., 1997a). Specific sensitivity of male rats is confirmed by *in vivo* comparisons between male and female F344 rats. Similar to mice, female rats generated higher amounts of S-1,2-dichlorovinyl-glutathione in the kidneys; however, the toxicologically relevant DCVC was found in higher concentrations in male animals (Lash et al., 2006). Humans, however, are thought to have a lower β -lyase activity than rats in the renal cytosol, which could render them less susceptible to kidney toxicity and carcinogenicity than rats (Lock and Reed, 2006). On the other hand, it has been discussed that differences between human individuals may more than outweigh this species difference as there may be an up to 50-fold individual variability in the rates of activation versus detoxification *via* mercapturic acids (Altuntas and Kharasch, 2002).

Mally et al. (2006) questioned the influence of genotoxic events *via* dichlorovinyl-cysteine-dependent metabolites. They conducted a 13-week study with Eker rats, which are very susceptible to renal cell carcinoma, and applied various doses of dichlorovinyl-cysteine to these animals. They observed clear nephrotoxicity at the highest dose and cell proliferation in kidney tubular cells. However, they found no preneoplastic lesions or increased tumours compared to control. These authors suggest that genotoxic events *via* the glutathione-dependent pathway of TCE metabolism are not contributing to the mode of action for TCE-induced kidney cancers.

Epidemiological studies provide different results concerning kidney tumours in humans. In

general, the positive studies were linked to high exposure concentrations (Henschler et al., 1995; Brüning et al., 2003; Vamvakas et al., 1998; Raaschou-Nielsen et al., 2003, Charbotel et al., 2006), at which non-neoplastic nephrotoxic effects occur as well. Especially the implication of very high and repetitive peak concentrations has been emphasised; under such conditions it is plausible that the oxidative metabolism of TCE reaches saturation, so that more TCE proceeds via the glutathione-dependent toxification pathway (Harth et al. 2005). This supports the hypothesis of non-linear increases in the dose-response relationship at high exposure concentrations and of a relevant contribution of cytotoxicity to the mode of action for kidney tumours in humans.

Kidney toxicity was observed in most but not in all of patients with kidney tumours previously exposed to TCE. Bolt et al. (2005) reported that for 15% (3/20) of the exposed persons, no such lesions were found. However, assuming a link between nephrotoxicity and renal cell cancer questioned the exposure quantification in these few cases may be questioned.

Lymphomas

There is no sufficient understanding of the mode of action for lymphoma as observed in one experimental animal study after TCE exposure. NHL after exposure to TCE were only described in humans. It may be speculated that the autoimmune effects which are associated with TCE (see section "Repeated dose toxicity") are linked to NHL occurrence. Hardell et al. (1998) have discussed such a mode of action. In general, as indicated in 3.7.2, the available evidence for such a coherence is not convincing at the present time. Moreover, induction of NHL by TCE is not supported by a plausible mode of action, as concerns for genotoxic activity in the blood systems are low.

Lung tumours

For lung tumours in mice, a species-specific effect is discussed, because mice are characterised by much higher activities of cytochrome P450 in Clara cells of the respiratory tract than other animal species, including humans. Chloral has been suspected to be the critical metabolite of TCE in mice leading to lung tumours (Green et al., 1997b). Most epidemiological studies do not point to an increased risk for lung cancer in humans after occupational exposure to TCE (Wartenberg et al., 2000).

3.8 Reproductive toxicity

3.8.1 Human data

Fertility

Sperm parameters have been assessed in workers primarily exposed to TCE in a study in Denmark. No differences in sperm count or abnormal sperm heads were found. However, the number of persons examined was very small (Rasmussen et al., 1988). Chia et al. (1996) found that 25% of the sperm obtained from 85 TCE-exposed workers in an electronic factory had normal morphology, which is lower than the percentage considered normal by the World Health Organisation (WHO). Sperm density was reduced in workers exposed to higher concentrations, but was within the normal variation. Neither of these studies provided clear evidence for effects of TCE on the sperm (Lamb and Hentz, 2006).

Elevated concentrations of TCE metabolites were found in semen of eight mechanics who had used TCE and who were classified as infertile according to WHO criteria (Folkert et al.,

2003). Dichloroacetyl adducts and DCVC was found in the epididymus and the efferent ducts of rats (DuTeaux et al., 2003).

Windham et al. (1991) reported increased odd ratios for spontaneous abortion among women exposed occupationally to TCE. Sallmén et al. (1995) discussed a possible increase of the time-to-pregnancy among women exposed to solvents including TCE. Because of mixed exposure to others solvents and possible bias in exposure reporting, this study may not be used for risk assessment.

Taskinen et al. (1989) and Sallmén et al. (1998) did not find associations between the pregnancy outcome and paternal exposure, if specifically restricted to TCE (with differing results for organic solvents in general).

Developmental toxicity

No epidemiological studies with occupational inhalation exposure have been located, in which a significant risk for teratogenic effects was specifically related to TCE. However, one study reported an insignificantly elevated risk for abortions related to TCE (Taskinen et al., 1994), and some studies linked risks for developmental effects to exposure to "solvents" in general (Hardin et al., 2005).

Watson et al. (2006) recently reviewed a total of 16 epidemiological studies, 5 of which addressed specifically the question whether TCE contributes to congenital heart disease (CHD), all others may have included TCE but are related to solvents and/or degreasing agents in general, thus not permitting a final conclusion regarding TCE. According to this review, Goldberg et al. (1990) interviewed parents of 246 children with CHD in an area contaminated with up to 239 ppb TCE. Exposure of the mothers could not be determined. Even though there was a significant difference to the control, the incidence of CHD was 6.8/1000, which is well within the background CHD rate. The study was criticised for inappropriate selection of the control group (Hardin et al., 2005). Bove et al. (1995) evaluated the birth register in 75 towns in Northern New Jersey and retrieved 346 infants with CHD. The CHD incidence in this study population was 4/1000. The average contamination of drinking water was 55 ppb. The odds ratio pointed to an insignificantly elevated risk for CHD. Lagakos et al. (1986) reported on the well-known Woburn contaminated site, where the contamination of the drinking water was 267 ppb TCE (with lesser amounts of other contaminants). 43 cases with CHD were identified. A correlation between TCE and CHD was not determined. Other malformations were alleged to be linked to TCE exposure (ear/ear and CNS/chromosomal/oral cleft malformations). An interviewer bias is judged as likely by Watson et al. (2006). ATSDR (1997) investigated a U.S. Marine Corps base in North Carolina with 141 infants born to mothers with short-term TCE exposure and 31 infants of mothers with long-term TCE exposure. The TCE concentration in drinking water varied between 20 and 1400 ppb. No link between TCE exposure and CHD was reported. The birth weight was significantly reduced in males. However, exposure of TCE could not be quantified. Yauck et al. (2004) performed a case-control study in Milwaukee, Wisconsin. The case group consisted of 245 infants with CHD. The amount of TCE was not quantified. The residences of the mothers were within 1.32 miles of TCE emission sources. Older exposed mothers were regarded to be at higher risk to give birth to a child with CHD compared to non-exposed older mothers. Younger mothers were not at higher risk. The group of infants with CHD born to older mothers was rather small (8 of 245; mothers age 38 years). Also, the authors debated the many uncertainties of the study (Scialli and Gibb, 2005). Reviewers concluded from epidemiology that there is insufficient evidence for an elevated risk for CHD after environmental TCE exposure (Hardin et al., 2005, Watson

et al., 2006). However, the negative evidence (no increased risk for CHD) is not very strong as well (Watson et al., 2006).

3.8.2 Animal data

Fertility

A number of inhalation studies have been performed with experimental animals. Rats did not show adverse effects on male reproductive parameters at 100 ppm (546 mg/m³) (NIOSH, 1980), but after exposure to 376 ppm (2055 mg/m³) TCE. At this concentration, testes weights were reduced and sperm counts and motility were decreased (Kumar et al., 2000, 2001).

In mice, the results from three studies are contradictory. There were no changes in sperm parameters after exposure to 200 ppm (1090 mg/m³) TCE in one study (Land et al., 1981), whereas the NIOSH study reported a two-fold increase in abnormal sperm at 100 ppm (546 mg/m³) and above (NIOSH, 1980). No adverse effects on testis weight, sperm count or sperm morphology were reported in a study by Xu et al. (2004) after exposure of mice to 1000 ppm (5460 mg/m³) TCE for up to 6 weeks. However, this concentration decreased the number of sperm bound per egg and the number of fertilised eggs.

Oral exposure of rats to 100 mg/kg • d did not result in adverse effects in one study (Zenick et al., 1984).

No effects on sperm concentration or motility was observed, when male Sprague-Dawley rats or Simonson albino rats received 0.2% or 0.4% TCE in drinking water (emulsified in vehicle; according to the authors corresponding to 1.6-2.0 and 3.4-3.7 mg TCE/kg • d; this conversion is not fully reproducible). However, slight changes were observed in the rat efferent ductile epithelium, sperm exhibited lipid peroxidation, oxidised proteins were found on the spermatozoa from treated animals and *in vitro* fertilisation was adversely affected (DuTeaux et al., 2004). Lamb and Hentz (2006) did not attribute toxicological relevance to these findings, because *in vitro* fertilisation effects are regarded as being not reflective of fertility effects *in vivo* and the low number of animals used in that study would preclude further conclusions. However, concentrations of 0.45% (with 3% vehicle, no dose given) in the drinking water for 2 weeks were recently reported to also affect the fertility of female rats (Wu and Berger, 2005). This report was only published as an abstract.

At much higher doses of TCE, clear cut effects on the fertility of mice were observed. An NTP study showed adverse effects in males (sperm motility, weight of right testes and seminal vesicle) at 845 mg/kg and above, but not below (NTP, 1985).

In summary, unequivocal reproductive effects in experimental animals were only observed at oral doses that were generally toxic with a NOAEL of 100 mg/kg • d after oral application. No adverse reproductive effects are expected at inhalation exposure to 100 ppm (546 mg/m³; NOAEC).

Developmental toxicity

TCE has been shown to lead to heart malformations in chick embryos (Elovaara et al., 1979; Loeber et al., 1988). Experimental studies and mechanistic considerations provide evidence that in chickens the stage of development may be crucial for exerting effects at very low doses (Drake et al., 2006, Robbiano et al., 2004). In inhalation studies with rodents, most did not show teratogenic responses, including one study according to OECD guidelines

(Zablontny et al., 2002). In two rat studies, skeletal and soft tissue variations were observed at high concentrations with concurrent maternal toxicity, resorptions were significantly increased and foetal body weights were reduced (Dorfmueller et al., 1979; Hurtt et al., 1993). The effect level was 1800 ppm (9840 mg/m³) or above.

No increased incidences of cardiac malformations were reported after gavage of 500 mg TCE/kg • d on gestation day 6-15 to rats (Fisher et al., 2001). However, "abnormal hearts" were observed in rats exposed to TCE before and during gestation at high concentrations of 1100 mg/l in drinking water (Dawson et al., 1993). In a recent study by Johnson et al. (2003) with rats exposed to TCE in drinking water during gestation (GD 0-22; 0 µg/l, 2.5 µg/l, 250 µg/l, 1.5 mg/l, 110 mg/l) cardiac defects were also observed, when foetuses were examined. However, no dose-response relationship was demonstrated, the report consisted of mixed new and earlier data and the study did not include a concurrent control (Hardin et al., 2005). Finally, a study with direct intrauterine delivery of TCE also showed an increased incidence of cardiac malformations at 1500 mg/l TCE in rats (which is above the maximum solubility in water), but not at 1.5 mg/l (Dawson et al., 1990).

Narotsky et al. (1995a,b) reported a study, in which where F344 rat pups showed a dose-dependent increase of eye defects (anophthalmia, microphthalmia). After oral exposure of the dams to 0, 475, 633, 844 and 1125 mg TCE /kg • d, the incidence in the offspring was 1%, 5.3%, 9.2%, 11.7% and 30%, respectively. The results indicate that TCE and its oxidative metabolites can disrupt ocular development in rats at high doses. EPA (2001) derived a BMDL₁₀ of 133 mg/kg • d for this study. Warren et al. investigated the respective dose-response relationship more closely and analysed the potency of the metabolites contributing to effects on eye development. They concluded that this developmental effect would only occur at higher doses although a causal relationship to TCE exposure may not be ignored (Warren et al., 2006).

The potential for trichloroethylene (TCE) (and perchloroethylene) to induce developmental toxicity was investigated in Crl:CD (SD) rats whole-body exposed to target concentrations of 0, 50, 150 or 600 ppm TCE or 0, 75, 250 C for six hours/day, seven days/week on gestation day (GD) 6-20 and 6-19, respectively. Actual chamber concentrations were identical to target. The highest exposure levels exceeded the limit concentration (2 mg/L) specified in the applicable test guidelines. Maternal necropsies were performed the day following the last exposure. Dams exposed to 600 ppm TCE exhibited maternal toxicity, as evidenced by decreased body weight gain (22% less than control) during GD 6-9. There were no maternal effects at 50 or 150 ppm TCE and no indications of developmental toxicity (including heart defects or other terata) at any exposure level tested. Therefore, the TCE NOEC for maternal toxicity was 150 ppm, whereas the embryo/fetal NOEC was 600 ppm (Carney et al. 2006).

3.9 Summary of critical endpoints of toxicity and related modes of action

The critical toxicity of trichloroethylene (TCE) is its carcinogenic effect. However, since the carcinogenic effect of TCE may be strongly linked to non-neoplastic organ toxicity, also other systemic effects, especially renal toxicity, become relevant endpoints for the assessment as well. Moreover, there are indications of autoimmune effects and reproductive toxicity, but such data are currently insufficient for a valid assessment. Sensory irritation may occur at similar or higher concentrations compared to (pre-narcotic) CNS effects. It is therefore not regarded as a critical endpoint for TCE risk assessment related to the workplace.

3.9.1 Systemic effects

Based on a subacute study with volunteers exposed to 100 and 200 ppm (546-1090 mg/m³) TCE and on subsequent Monte-Carlo simulation, a conservative NOAEC of 30 ppm (165 mg/m³) was modelled for CNS effects by Simon et al. (1997). Many studies reported CNS effects like fatigue or drowsiness. Formerly, the protection from CNS effects was regarded as decisive for setting an OEL for TCE. Other systemic effects (notably renal toxicity) are today seen in the foreground as the protection from those effects also minimises the risk of carcinogenicity.

In a cross-sectional occupational field study, 70 workers exposed to TCE were examined for possible renal dysfunction by Green et al. (2004). The mean exposure concentration was 32 ppm (175 mg/m³; range 0.5-252 ppm). The workers showed some minor subclinical alterations in renal functional parameters. Exposed workers eliminated higher concentrations of formic acid and methylmalonic acid and had elevated urinary N-acetylglucosaminidase (NAG) and albumin levels (although the latter two parameters did not correlate with the TCA concentrations in urine). This level may be regarded as a marginal LOAEC for nephrotoxicity. At slightly lower concentrations, a NOAEC may be established based on another small study, but basically confirming the results of the study by Green et al. (2004): Seldén et al. (1993) reported no increase of NAG excretion in workers chronically exposed to 6-10 ppm (33-55 mg/m³) TCE.

Hepatotoxic effects are not analysed in detail for humans. From experimental animal experiments it may be expected that adverse liver effects occur at similar or higher doses than kidney toxicity. Therefore, it is plausible to assume that protection from kidney effects does also account for potential liver effects.

3.9.2 Autoimmune effects

Occupational inhalation exposure to TCE at low concentrations (mean 6.4 ppm, 35 mg/m³) is associated with significant immunological reactions (activity changes in interferon-gamma, interleukin-2, interleukin-4) (Lavicoli et al., 2005). Similar effects were observed in animal studies with oral chronic application of TCE in drinking water at moderately elevated doses (NOAEL 21 mg/kg · d; LOAEL 100 mg/kg · d) (Griffin et al., 2000). At the LOAEL, effects observed were consistent with autoimmune hepatitis. Applying a conservative default route-to-route extrapolation, a NOAEL of 21 mg/m³ (4 ppm) appears plausible. The effects after prolonged exposure to higher doses are similar to the defects that have been linked with the development of several idiopathic autoimmune diseases such as lupus nephritis, multiple sclerosis, autoimmune haemolytic anaemia and arthritis in both humans and mice (Blossom et al., 2004). Chronic exposure to trichloroethylene in contaminated drinking water had been associated with *lupus erythematosus* in earlier studies (Kilburn and Warshaw, 1992). However, the data in humans need to be confirmed, because this single report (Lavicoli et al., 2005) is of limited reporting quality. The relative sensitivity of the mouse strain used for experimental studies precludes a quantitative use of the results for human risk assessment.

3.9.3 Reproductive Toxicity

No adverse effects on human male or female fertility were observed for workplace exposures to concentrations, at which no other systemic effects occurred. Similar conclusions were recently derived for male fertility by Lamb and Hentz (2006). However, effects on in vitro fertilisation capacity of rat sperm and slight oxidative damage to the excurrent ducts in rats at much lower doses (observed already at 1.8 mg/kg · d) after oral uptake of TCE (DeTeaux et al., 2004) deserve further clarification, especially in relation to the doses applied and the adverse nature of the effects.

TCE potentially exerts developmental effects (mainly congenital heart disease and eye malformations). However, eye malformations would only be expected at high doses, at which other toxic effects are observed (Warren et al., 2006). Congenital heart disease was demonstrated in chick embryos. Mechanistic considerations also show a link between TCE (and TCA) exposure and developmental impairments for the heart of mammals (Selmin et al., 2005). Epidemiological evidence does not support the occurrence of this teratogenic effect after human uptake of TCE from contaminated drinking water, and animal studies demonstrate such effects at much higher doses than those relevant for OEL derivation (Dawson et al., 1990). In addition, positive results are contradicted by qualified negative studies (Zabotny et al., 2002). An overall evidence for development of congenital heart disease due to TCE exposure in relevant doses is not sufficiently supported (Watson et al., 2006, Hardin et al., 2005).

3.9.4 Genotoxicity and carcinogenicity

A weak mutagenic effect of TCE *in vitro* may be assumed (Harth et al., 2005). Evidence exists that TCE leads to specific mutations in the kidney at the von-Hippel-Lindau (VHL) tumour suppressor gene (Brauch et al., 1999, 2004). Most appropriately conducted animal tests *in vivo* for genotoxicity were negative. Human *in vivo* data are contradictory and do not permit firm conclusions.

However, some of the metabolites are genotoxic, especially those formed *via* the minor reductive pathway of metabolism, if not eliminated as mercapturic acids. DCVC may possibly react with DNA, and chlorothioketenes are genotoxic (Moore and Harrington-Brock, 2000; Harth et al., 2005). In addition, the assumed minor oxidative metabolite dichloroacetic acid (DCA) is genotoxic in several *in vitro* and *in vivo* assays (IARC, 1995), but is probably of minor relevance in TCE metabolism in humans.

Therefore, it is plausible that genotoxicity may contribute to the genesis of specific local tumours, but that genotoxicity is probably not the general major driving force for carcinogenesis of TCE as with classic DNA-alkylating agents. In general, TCE presumably acts *via* a number of different mechanisms in parallel, some of which result in tumours in experimental animals and in humans (Lock and Reed, 2006).

Conflicting results regarding *liver tumours* were obtained in epidemiological studies. In a recent combined assessment (liver and biliary passage cancers in humans from most existing epidemiological studies), the overall risk for these cancers was only slightly and insignificantly elevated. In those few studies, in which liver cancer was assessed separately from biliary cancer, the risk appears more strongly increased but, is still only insignificantly (Scott and Chiu, 2006). In terms of mechanism, it is assumed that, if this tumour location is relevant in humans at all, liver tumours would be induced by a different mode of action in humans compared to mice. For mice, the TCE metabolite trichloroacetic acid may lead to peroxisomal proliferation in livers via the peroxisome proliferator-activated receptor α (PPAR α). This mechanism is supported by recent studies with wild-type and PPAR α knock-out mice (Luaghter et al., 2004). The respective PPAR α receptors are only found to a minor degree in humans (Smith et al., 2005).

In summary, there is no clear evidence for TCE-induced human liver tumours from epidemiology. Genotoxicity is probably not the determining mode of action for tumours in the liver. However, it is assumed that protection from the risk for kidney tumours would equally protect from the risk for liver tumours. This is based on a similar cytotoxic potency of TCE in the liver and the kidney and on the assumption that a strongly sub-linear dose-

response relationship would be the appropriate and still conservative risk extrapolation method for both tumour locations (Lock and Reed, 2006).

For other possible tumour locations including *non-Hodgkin's lymphoma* (NHL), a risk quantification is again impossible. Even though there is some evidence from a meta-analysis that NHL are indeed possible tumours in humans (Mandel et al., 2006), it is not believed that genotoxicity is an important factor for this type of tumour in the case of TCE. SCOEL considers the evidence for an association of NHL and TCE exposure as being too weak to require regulatory attention.

For *kidney tumours*, the evidence from human studies is much stronger, and especially supported by the most recent studies of Brüning et al. (2003), Raaschou-Nielsen et al. (2003) and Charbotel et al. (2006). The results of animal studies in the male rat and data on metabolism and modes of action are supportive of a relevant renal carcinogenicity of TCE (Lock and Reed, 2006). Genotoxicity may contribute to the mechanism because DCVC and its respective β -lyase products have a genotoxic potential. Moreover, mutations of the VHL gene in the kidney tumours of TCE-exposed humans are plausibly associated with a loss of tumour suppression and subsequent growth of renal cell tumours. In general, a mechanism can reasonably be assumed, where kidney toxicity combined with genotoxicity in the kidney are co-carcinogenic factors (Harth et al. 2005). Importantly, tumours in human kidneys were only observed after occupational TCE exposure to very high concentrations, which are clearly nephrotoxic. Such exposures clearly exceeded former exposure limits of 50 ppm, and peak exposures of several hundred ppm very likely involved. At these high dose ranges, it is known that the toxification of TCE *via* the reductive glutathione-pathway is proportionally increased, compared to lower doses where glutathione-dependent metabolism is only marginal. This is because the oxidative CYP-dependent metabolism is saturable. Both aspects, the impact of cytotoxicity and the relative increase of glutathione-dependent metabolism at high doses of TCE, make a sub-linear dose-response relationship at lower exposure concentrations highly plausible (Harth et al., 2005; Lock and Reed, 2006). Therefore, a linear extrapolation of kidney tumour risks should be limited to clearly nephrotoxic concentrations. Even this approach is still conservative, as the relative influence of glutathione-dependent metabolism at slightly nephrotoxic exposure concentrations has probably already decreased, compared to the much higher concentrations at which tumours have been observed.

Recommendation

As outlined above, the development of cancer in persons occupationally exposed to TCE is the decisive endpoint for measures of prevention, including setting of an OEL. These matter have been discussed very recently both in Europe (Harth et al. 2005) and in the United States (Chiu et al., 2006a; National Research Council/Committee on Human Health Risks of Trichloroethylene, 2006), and remaining research needs have been addressed. With respect to liver cancer, humans can reasonably be assumed to be much less susceptible than rodents (National Research Council, 2006). The available data on non-Hodgkin lymphoma related to human TCE exposure appear not consistent so far.

Although open questions still remain, it is clear that the key target of human trichloroethylene toxicity and carcinogenesis is the kidney, notably the proximal tubule. Based on several recent studies (see above), human renal cell cancer has been observed in highly and repetitively exposed workers, having used TCE mostly in metal degreasing activities. The mode of action is likely to involve multiple pathways, as discussed above. Several lines of evidence suggest a sub-linear dose-tumour response, as outlined in detail in the preceding chapter. Observations in

experimental systems, as well as in occupationally exposed and diseased persons, lead to the conclusion that human renal cell cancer risk is avoided if exposure to nephrotoxic concentrations of TCE do not occur, including TCE concentrations leading to sub-clinical renal changes that can be monitored by urinary excretion of suitable marker proteins. In the occupational field study by Green et al. (2004) on 70 workers, the mean TCE exposure was 32 ppm (range 0.5-252 ppm). In this cohort some minor sub-clinical alterations in renal functional parameters were observed. This is corroborated by data of Seldén et al. (1993), who found no increase in urinary excretion of the NAG marker protein in workers exposed to a range of 6-10 ppm TCE.

Against this background and with reference to its strategy in the derivation of OELs for carcinogens and mutagens (Bolt and Huici-Montagud, 2008), SCOEL regards TCE as a “*genotoxic carcinogen, for which a practical threshold is supported by studies on mechanisms and/or toxicokinetics*” (group C).

Hence, a health-based OEL may be established based on a NOAEL in exposed humans, which is again related to the avoidance of renal toxicity. Based on the studies of Green et al. (2004) and Seldén et al. (1993), an OEL (TWA) of 10 ppm is therefore proposed for TCE.

As high TCE peak exposures have been described as being critical in the development of human renal cell cancer, a STEL can provide additional protection against potentially hazardous over-exposures. Considering a mean TCE exposure level of 32 ppm reported in the aforementioned field study of Green et al. (2004), a STEL of 30 ppm is proposed, in order to ensure an adequate safety margin to potentially nephrotoxic exposure situations.

Biological monitoring

Biological monitoring of TCE is well established by measuring TCA concentrations in the urine after shift. A concentration of 10 ppm TCE in air (i.e., the proposed OEL) corresponds to 20 mg TCA/l urine (Lehnert and Greim, 2003).

Hence, corresponding to the recommended OEL a BLV is proposed of 20 mg trichloroacetic acid (TCA) per litre urine. It should be noted that other chlorinated hydrocarbons, i.e. 1,1,1-trichloroethane and perchloroethylene, are also converted to trichloroacetic acid, which is excreted in the urine. However, quantitatively 1,1,1-trichloroethane and perchloroethylene are mostly exhaled unchanged, and only 15% or less of these compounds is metabolised. In industrial practice this must be observed. In view of the very long half-life time of trichloroacetic acid (about 100 h; Henschler and Lehnert, 1983) the urine sampling should be by the end of the last shift of a workweek or a shift period.

In the industrial practice, the monitoring of external and internal exposure can reasonably be supplemented by application of biological effect markers for slight and subclinical nephrotoxicity. This refers to the excretion of marker proteins of tubular damage in the urine (Brüning et al., 1999). For this purpose, NAG (Green et al., 2004; GST-alpha (Brüning et al., 1999a) and beta₂-microglobulin (Bolt et al. 2004) have been used successfully. Reference can therefore be made to these publications.

Other assignments

A skin notation is recommended, as considerable percutaneous absorption was evidenced in earlier toxicokinetic studies (Stewart and Dodd 1964, Sato and Nakajima 1978). This was supported by Tsuruta (1978) after application of neat TCE to mouse skin.

No indication exists for a relevant skin sensitising potency of TCE. No reports on respiratory sensitisation are available.

At typical workplace exposure concentrations, no analytical difficulties are expected.

References

Abe, K., 1988

Determination of olfactory threshold values of organic solvents for the control of the working environment
Journal of Working Environment, 9, 1988, 57-62

Adams, E.M.; Spencer, H.C.; Rowe, V.K.; McCollister, D.D.; Irish, D.D., 1951

Vapor toxicity of trichloroethylene determined by experiments on laboratory animals
Archives of Industrial Hygiene and Occupational Medicine, 4, 1951, 469-481

AIHA, American Industrial Hygiene Association, 1997

Odor Thresholds for Chemicals with Established Occupational Health Standards
American Industrial Hygiene Association, Fairfax, VA, USA, 1997

Alexander, D.D.; Mink, P.J.; Mandel, J.H.; Kelsh, M.A., 2006

A meta-analysis of occupational trichloroethylene exposure and multiple myeloma or leukaemia
Occupational Medicine, 56, 2006, 485-493

Allen, B.C.; Fisher, J.W., 1993

Pharmacokinetic modelling of trichloroethylene and trichloroacetic acid in humans
Risk Analysis, 13, 1993, 71-86

Altuntas, T.G.; Kharasch, E.D., 2001

Glutathione S-conjugation of the sevoflurane degradation product, fluoromethyl-2,2-difluoro-1(trifluoromethyl)vinyl ether (compound A) in human liver, kidney, and blood in vitro
Toxicology and Applied Pharmacology, 177, 2001, 85-93, cited in Lock and Reed, 2006

Anderson, C.; Sundberg, K.; Groth, O., 1986

Animal model for assessment of skin irritancy
Contact Dermatitis, 15, 1986, 143-151, cited in ECB, 2004

Anttila, A.; Pukkala, E.; Sallmen, M.; Hernberg, S.; Hemminki, K., 1995

Cancer incidence among Finnish workers exposed to halogenated hydrocarbons
Journal of Occupational and Environmental Medicine, 37, 1995, 797-806

Arai, H.; Nomiyama, H.; Saito, K.; Nomiyama, K., 1988

Health effects of high concentration of TCE exposure for 12 weeks in rats
Sangyo-Igaku, 30, 1988 410-411, cited in ECB, 2004

Aranyi, C.; O'Shea, W.J.; Graham, J.A.; Miller, F.J., 1986

The effects of inhalation of organic chemical air contaminants on murine lung host defenses
Fundamental and Applied Toxicology, 6, 1986, 713-720

Arito, H.; Takahashi, M.; Ishikawa, T., 1994

Effect of subchronic inhalation exposure to low-level trichloroethylene on heart rate and

- wakefulness-sleep in freely moving rats
Japanese Journal of Industrial Health, **36**, 1994, 1-8
- Astrand, I.; Ovrum, P., 1976
Exposure to trichloroethylene. I. Uptake and distribution in man
Scandinavian Journal of Work, Environment and Health, **4**, 1976, 199-211, cited in ECB, 2004
- ATSDR, Agency for Toxic Substances and Disease Registry, 1997
Toxicological Profile for Trichloroethylene. Update
U.S. Department of Health and Human Services; Public Health Service, 1997
- Axelson, O.; Andersson, K.; Hogstedt, C.; Holmberg, B.; Molina, G.; De Verdier, A., 1978
A cohort study on trichloroethylene exposure and cancer mortality
Journal of Occupational Medicine, **20**, 1978, 194-196
- Axelson, O.; Selden, A.; Anderson, K.; Hogstedt, C., 1994
Updated and expanded Swedish cohort study on trichloroethylene and cancer risk
Journal of Occupational Medicine, **36**, 1994, 556-562
- Bauer, M.; Rabens, S.F., 1974
Cutaneous manifestations of trichloroethylene toxicity
Archives of Dermatology, **110**, 1974, 886-890, cited in ECB, 2004
- Bergman, K., 1979
Whole body autoradiography and allied tracer techniques in distribution and elimination studies of some organic solvents. Trichloroethylene
Scandinavian Journal of Work, Environment and Health, **5**, Suppl 1, 1979, 189-216, cited in ECB, 2004
- Blair, A.; Hartge, P.; Stewart, P.A.; McAdams, M.; Lubin, J., 1998
Mortality and cancer incidence of aircraft maintenance workers exposed to trichloroethylene and other organic solvents and chemicals: extended follow up
Occupational and Environmental Medicine, **55**, 1998, 161-171
- Blossom, S.J.; Pumford, N.R.; Gilbert, K.M., 2004
Activation and attenuation of apoptosis of CD4⁺ T cells following in vivo exposure to two common environmental toxicants, trichloroacetaldehyde hydrate and trichloroacetic acid
Journal of Autoimmunity, **23**, 2004, 211-220
- Bogen, K.T.; Colston, B.W.; Machicao, L.K., 1992
Dermal absorption of dilute aqueous chloroform, trichloroethylene, and tetrachloroethylene in hairless guinea pigs
Fundamental and Applied Toxicology, **18**, 1992, 30-39
- Boice, J.D.; Marano, D.E.; Fryzek, J.P.; Sadler, C.J.; McLaughlin, J.K., 1999
Mortality among aircraft manufacturing workers
Occupational and Environmental Medicine, **56**, 1999, 581-597
- Bois, F.Y., 2000a
Statistical analysis of Fisher et al. PBPK mode) of trichloroethylene kinetics
Environmental Health Perspectives, **108**, 2000, 275-282, cited in Chiu et al., 2006

- Bois, F.Y., 2000b
Statistical analysis of Clewell et al. PBPK mode) of trichloroethylene kinetics
Environmental Health Perspectives, **108**, Suppl 2, 307-316, cited in Chiu et al., 2006
- Bolt, H.M., Huici-Montagud, A., 2008 Strategy of the scientific committee on occupational exposure limits (SCOEL) in the derivation of occupational exposure limits for carcinogens and mutagens *Arch Toxicol* **82**, 2008, 61-64
- Bolt HM, Roos PH, Thier R. (2003) The cytochrome P-450 isoenzyme CYP2E1 in the biological processing of industrial chemicals: consequences for occupational and environmental medicine. *Int Arch Occup Environ Health*. 76:174-185.
- Bolt, H.M.; Lammert, M.; Selinski, S.; Brüning, T., 2004
Urinary α_1 -microglobulin excretion as biomarker of renal toxicity in trichloroethylene-exposed persons
International Archives of Occupational and Environmental Health, **77**, 2004, 186-190
- Bove, F.J.; Fulcomer, M.C.; Klotz, J.B.; Esmart, J.; Dufficy, E.M.; Savrin, J.E., 1995
Public drinking water contamination and birth outcomes
American Journal of Epidemiology, **141**, 1995, 850-862
- Brauch, H.; Weirich, G.; Hornauer, M.A.; Störkel, S.; Wöhl, T.; Brüning, T., 1999
Trichloroethylene exposure and specific somatic mutations in patients with renal cell carcinoma
Journal of the National Cancer Institute, **91**, 1999, 854-861
- Brauch, H.; Weirich, G.; Klein, B.; Rabstein, S.; Bolt, H.M.; Brüning, T., 2004
VHL mutations in renal cell cancer: does occupational exposure to trichloroethylene make a difference?
Toxicology Letters, **151**, 2004, 301-310
- Brüning, T.; Bolt, H.M., 2000
Renal toxicity and carcinogenicity of trichloroethylene: key results, mechanisms, and controversies
Critical Reviews in Toxicology, **30**, 2000, 253-285
- Brüning, T.; Weirich, G.; Hornauer, M.A.; Höfler, H.; Brauch, H., 1997
Renal cell carcinomas in Trichloroethene (TRI) exposed persons are associated with somatic mutations in the von Hippel-Lindau (VHL) tumour suppressor gene
Archives of Toxicology, **71**, 1997, 332-335
- Brüning, T.; Mann, H.; Melzer, H.; Sundberg, A.G.M.; Bolt, H.M., 1999
Pathological excretion patterns of urinary proteins in renal cell cancer patients exposed to trichloroethylene
Occupational Medicine, **49**, 1999, 299-305
- Brüning, T.; Sundberg, A.G.M.; Bimer, G.; Lammert, M.; Bolt, H.M., 1999a
Glutathione transferase alpha as a marker for tubular damage after trichloroethylene exposure. *Arch Toxicol*, **73**, 1999, 246-254
- Brüning, T.; Pesch, B.; Wiesenhütter, B.; Rabstein, S.; Lammert, M.; Baumüller, A.; Bolt, H.M., 2003
Renal cell cancer risk and occupational exposure to trichloroethylene: results of a

consecutive case-control study in Arnsberg, Germany. *Am J Ind Med*, **43**, 2003, 274-285

Bull, R.J., 2004

Trichloroethylene and liver tumors in mice

In: Symposium on New Scientific Research Related to the Health Effects of

Trichloroethylene, 26-27 February 2004, Washington DC

U.S. Environmental Protection Agency, Washington, DC

online: <http://cfpub.epa.gov/ncea/cfm/recordisplay.cfm?deid=75934>, accessed November 2006

Bull, R.J.; Templin, M.; Larson, J.L.; Stevens, D.K., 1993

The role of dichloroacetate in the hepatocarcinogenicity of trichloroethylene

Toxicology Letters, **68**, 1993, 203-211

Bull, R.J.; Orner, G.A.; Cheng, R.S.; Stillwell, L.; Stauber, A.J.; Sasser, L.B.; Lingohr, M.K.; Thrall, B.D., 2002

Contribution of dichloroacetate and trichloroacetate to liver tumor induction in mice by trichloroethylene

Toxicology and Applied Pharmacology, **182**, 2002, 55-65

Caldwell, J.C.; Keshava, N., 2006

Key issues in the modes of action and effects of trichloroethylene metabolites for liver and kidney tumorigenesis

Environmental Health Perspectives, **114**, 2006, 1457-1463

Carney, E.W., Thorsrud, B.A., Dugard, P.H., Zlabotny, C.L. (2006) Developmental toxicity studies in Crl:CD (SD) rats following inhalation exposure to trichloroethylene and perchloroethylene. *Birth Defects Res B Dev Reprod Toxicol* 77: 405-412.

Charbotel, B.; Fevotte, J.; Hours, M.; Martin, J.L.; Bergeret, A., 2006

Casecontrol study on renal cell cancer and occupational exposure to trichloroethylene. Part II: Epidemiological aspects

Annals of Occupational Hygiene, **50**, 2006, 777-787

Chiu, W.A.; Caldwell, J.C.; Keshava, N.; Scott, C.S., 2006a

Key scientific issues in the health risk assessment of trichloroethylene

Environmental Health Perspectives, **114**, 2006, 1445-1449

Chiu, W.A.; Okino, M.S.; Lipscomb, J.C.; Evans, M.V., 2006b

Issues in the pharmacokinetics of trichloroethylene and its metabolites

Environmental Health Perspectives, **114**, 2006, 1450-1456

Clewell, H.; Andersen, M., 2004

Applying mode-of-action and pharmacokinetic considerations in contemporary cancer risk assessments: an example with trichloroethylene

Critical Reviews in Toxicology, **34**, 2004, 385-445

Clewell, H.J.; Gentry, P.R.; Covington, T.R.; Gearhart, J.M., 2000

Development of a physiologically based pharmacokinetic model of trichloroethylene and its metabolites for use in risk assessment

Environmental Health Perspectives, **108**, Suppl. 2, 283-305, cited in Chiu et al., 2006

Conde-Salazar, L.; Guimaraens, D.; Romero, L.V.; Sanchez-Yus, E., 1983

Subcomeal pustular eruption and erythema from occupational exposure to trichloroethylene

- Contact Dermatitis, **19**, 1983, 235-237, cited in ECB, 2004
- Crebelli R, Bignami M, Conti L, Carere A. (1982) Mutagenicity of trichloroethylene in Salmonella typhimurium TA100. *Ann Ist Super Sanita.* 18:117-121
- CTL, 1998
Trichloroethylene and S-1,2-dichlorovinylcysteine: in vivo comet and UDS assays in the rat
Report no: CTL/T/2976 (with first supplement), Central Toxicology Laboratory, Alderley Park, Macclesfield, Cheshire. As cited in ECB, 2004
- Davidson, I.W.F.; Beliles, R.P., 1991
Consideration of the target organ toxicity of trichloroethylene in terms of metabolite toxicity and pharmacokinetics
Drug Metabolism Reviews, **23**, 1991, 493-599, cited in ECB, 2004
- Dawson, B.V.; Johnson, P.D.; Goldberg, S.J.; Ulreich, J.B., 1990
Cardiac teratogenesis of trichloroethylene and dichloroethylene in a mammalian model
Journal of the American College of Cardiology, **16**, 1990, 1304-1309
- Dawson, B.V.; Johnson, P.D.; Goldberg, S.J.; Ulreich, J.B., 1993
Cardiac teratogenesis of halogenated hydrocarbon-contaminated drinking water
Journal of the American College of Cardiology, **21**, 1993, 1466-1472
- Dekant, W.; Metzler, M.; Henschler, D., 1984
Novel metabolites of trichloroethylene through dechlorination reactions in rats, mice and humans
Biochemical Pharmacology, **33**, 1984, 2021-2027
- Dorfmueller, M.A.; Henne, S.P.; York, R.G.; et al., 1979
Evaluation of teratogenicity and behavioural toxicity with inhalation exposure of maternal rats to trichloroethylene
Toxicology, **14**, 1979, 153-166, cited in Hardin et al., 2005
- Douglas, G.R.; Gingerich, J.D.; Soper, L.M.; Potvin, M.; Bjarnason, S., 1999
Evidence for the lack of base-change and small-deletion mutation induction by trichloroethylene in *IacZ* transgenic mice
Environmental Molecular Mutagenesis, **34**, 1999, 190-194, cited in NTP, 2000
- Dow Chemical Company, 1993
Neurotoxicological Examination of Rats Exposed to Trichloroethylene Vapour for 13 Weeks
Unpublished Report, 1993, cited in ECB, 2004
- Dow, J.; Green, T., 2000
Trichloroethylene induced vitamin B12 and folate deficiency leads to increased formic acid excretion in the rat
Toxicology, **146**, 2000, 123-136, cited in UAIII, 2006
- Drake, V.J.; Koprowski, S.L.; Hu, N.; Smith, S.M.; Lough, J., 2006
Cardiogenic effects of trichloroethylene and trichloroacetic acid following exposure during heart specification of avian development
Toxicological Sciences, **94**, 2006, 153-162

- Duprat, P.; Delsaut, L.; Gradiski, D., 1976
Irritant potency of the principal chlorinated aliphatic solvents on the skin and ocular mucous membranes of rabbits
European Journal of Toxicology, **3**, 1976, 171-177, cited in ECB, 2004
- Du Teaux, S.B.; Berger, T.; Hess, R.A.; Sartini, B.L.; Miller, M.G., 2004
Male reproductive toxicity of trichloroethylene: sperm protein oxidation and decreased fertilizing ability
Biology of Reproduction, **70**, 2004, 1518-1526
- ECB, European Chemicals Bureau, 2004
European Union Risk Assessment Report: Trichloroethylene. 1st Priority List, Vol. 31
EUR 21057 EN. European Commission. Joint Research Centre, 2004
- Elcombe, C.R.; Rose, M.S.; Pratt, I.S., 1985
Biochemical, histological, and ultrastructural changes in rat and mouse liver following the administration of trichloroethylene: Possible relevance to species differences in hepatocarcinogenicity
Toxicology and Applied Pharmacology, **79**, 1985, 365-376
- Elovaara, E.; Hemminki, K.; Vainio, H., 1979
Effects of methylene chloride, trichloroethane, trichloroethylene, tetrachloroethylene and toluene on the development of chick embryos
Toxicology, **12**, 1979, 111-119
- EPA, Environmental Protection Agency, 2001
Trichloroethylene Health Risk Assessment: Synthesis and Characterization. Draft
U.S. Environmental Protection Agency, Washington, DC, 2001
- Eitle, T.; Henschler, D.; Muller, G.; Spassowski, M., 1972
Metabolism of trichloroethylene in man. I. The significance of trichloroethylene in long-term exposure conditions
Archives of Toxicology, **29**, 1972, 171-188, cited in ECB, 2004
- Ettema, J.H.; Zielhuis, R.L., 1975
Effects of alcohol, carbon monoxide, and trichloroethylene exposure on mental capacity
International Archives of Occupational and Environmental Health, **35**, 1975, 117-132
- Fevotte, J.; Charbotel, B.; Muller-Beaute, P.; Martin, J.L.; Hours, M.; Bergeret, A., 2006
Case control study on renal cell cancer and occupational exposure to trichloroethylene. Part 1: Exposure assessment
Annals of Occupational Hygiene, **50**, 2006, 765-775
- Fisher, J.W., 2000
Physiologically based pharmacokinetic models for trichloroethylene and its oxidative metabolites
Environmental Health Perspectives, **108**, Suppl. 2, 2000, 265-273, cited in Chiu et al., 2006
- Fisher, J.W.; Gargas, M.L.; Allen, B.C.; Andersen, M.E., 1991
Physiologically based pharmacokinetic modelling with trichloroethylene and its metabolite, trichloroacetic acid, in the rat and mouse
Toxicology and Applied Pharmacology, **109**, 1991, 183-195
- Fisher, J.W.; Channel, S.R.; Eggers, J.S.; et al., 2001

- Trichloroethylene, trichloroacetic acid, and dichloroacetic acid: do they affect fetal rat heart development?
International Journal of Toxicology, **20**, 2001, 257-267, cited in Hardin et al., 2005
- Fonzi, S.; Focardi, L.; Raddi, R., 1967
Trichloroethylene as a hepatotoxic substance. Experimental study in chronic poisoning
Lavoro Umato, **29**, Suppl. 12, 1967, 94-110, cited in ECB, 2004
- Forkert, P.G.; Troughton, K.M., 1987
Airway injury by trichloroethylene: a scanning electron microscopic study
Journal of Pathology, **152**, 1987, 119-125, cited in ECB, 2004
- Forkert, P.G.; Birch, D.W., 1989
Pulmonary toxicity of trichloroethylene in mice
Drug Metabolism and Disposition, **17**, 1989, 106-113
- Forkert, P.G.; Sylvestre, P.L.; Poland, J.S., 1985
Lung injury induced by trichloroethylene
Toxicology, **34**, 1985, 143-160, cited in ECB, 2004
- Forssman, S.; Holmquist, C.E., 1953
The relation between inhaled and exhaled trichloroethylene and trichloroacetic acid excreted in the urine of rats exposed to trichloroethylene
Acta Pharmacologica et Toxicologica, **9**, 1953, 235-244, cited in ECB, 2004
- Friberg, L.; Kylin, B.; Nystrom, A., 1953
Toxicities of trichloroethylene and tetrachloroethylene and Fujiwara's pyridine-alkali reaction
Acta Pharmacologica et Toxicologica, **9**, 1953, 303-312, cited in ECB, 2004
- Fukuda, K.; Takemoto, K.; Tsuruta, H., 1983
Inhalation carcinogenicity of trichloroethylene in mice and rats
Industrial Health, **21**, 1983, 243-254, cited in IARC, 1995
- Goldberg, M.E.; Johnson, H.E.; Pozzani, U.C.; Smyth, H.F., 1964a
Behavioural response of rats during Inhalation of trichloroethylene and carbon disulphide vapours
Acta Pharmacologica et Toxicologica, **21**, 1964, 36-44, cited in ECB, 2004
- Goldberg, M.E.; Johnson, H.E.; Pozzani, U.C.; Smyth, H.F., 1964b
Effect of repeated Inhalation of vapors of industrial solvents on animal behaviour
American Industrial Hygiene Association Journal, **25**, 1964, 369-375
- Goldberg, S.J.; Lebowitz, M.D.; Graver, E.J.; Hicks, S., 1990
An association of human congenital cardiac malformations and drinking water contaminants
Journal of the American College of Cardiology, **16**, 1990, 155-164
- Goldsworthy, T.L.; Lyght, O.; Burnett, V.L.; Popp, J.A., 1988
Potential role of alpha-2 mu-globulin, protein droplet accumulation, and cell replication in the renal carcinogenicity of rats exposed to trichloroethylene, perchloroethylene, and pentachloroethane
Toxicology and Applied Pharmacology, **96**, 1988, 367-379, cited in Lock and Reed, 2006
- Grandjean, E., 1960
Trichloroethylene effects on animal behaviour

- Archives of Environmental Health, **1**, 1960, 106-108, cited in ECB, 2004
- Grandjean, E., 1963
The effects of short exposures to trichloroethylene on swimming performances and motor activity of rats
American Industrial Hygiene Association Journal, **24**, 1963, 376-379, cited in ECB, 2004
- Grandjean, E.; Battig, K., 1964
Effects of trichloroethylene on behaviour of the rat
Archives Internationales de Pharmacodynamie et de Therapie, **147**, 1964, 330-350, cited in ECB, 2004
- Green, T.; Prout, M.S., 1985
Species differences in response to trichloroethylene. II. Biotransformation in rats and mice
Toxicology and Applied Pharmacology, **79**, 1985, 401-411
- Green, T.; Dow, J.; Ellis, M.K.; Foster, J.R.; Odum, J., 1997a
The role of glutathione conjugation in the development of kidney tumours in rats exposed to trichloroethylene
Chemico-Biological Interactions, **105**, 1997, 99-117
- Green, T.; Mainwaring, G.W.; Foster, J.R., 1997b
Trichloroethylene-induced mouse lung tumors: studies of the mode of action and comparisons between species
Fundamental and Applied Toxicology, **37**, 1997, 125-130
- Green, T.; Dow, J.; Foster, J.R.; Hext, P.M., 1998
Formic acid excretion in rats exposed to trichloroethylene: a possible explanation for renal toxicity in long-term studies
Toxicology, **127**, 1998, 39-47
- Green, T.; Dow, J.; Foster, J., 2003
Increased formic acid excretion and the development of kidney toxicity in rats following chronic dosing with trichloroethanol, a major metabolite of trichloroethylene
Toxicology, **191**, 2003, 109-119
- Green, T.; Dow, J.; Ong, C.N.; Ng, V.; Ong, H.Y.; Zhuang, Z.X.; Yang, X.F.; Bloemen, L., 2004
Biological monitoring of kidney function among workers occupationally exposed to trichloroethylene
Occupational and Environmental Medicine, **61**, 2004, 312-317
- Greim, H., 1996
Gesundheitsschädliche Arbeitsstoffe, Toxikologisch-arbeitsmedizinische Begründungen von MAK Werten, Loseblattsammlung, 22.
DFG, Deutsche Forschungsgemeinschaft, VCH Verlag Weinheim, 1996
- Greim, H., 2000
Gesundheitsschädliche Arbeitsstoffe, Toxikologisch-arbeitsmedizinische Begründungen von MAK Werten, Loseblattsammlung, 31. Lfg.
DFG, Deutsche Forschungsgemeinschaft, WILEY-VCH Verlag, Weinheim, 2000
- Greim, H.; Lehnert, G., 1996
Biologische Arbeitsstoff-Toleranz-Werte (BAT-Werte) und Expositionsäquivalente für

- krebserzeugende Arbeitsstoffe (EKA), Arbeitsmedizinisch-toxikologische Begründungen 8. Lfg. DFG, Deutsche Forschungsgemeinschaft, 1996
- Griffin, J.M.; Gilbert, K.M.; Lamps, L.W.; Pumford, N.R., 2000
CD4⁺T-cell activation and induction of autoimmune hepatitis following trichloroethylene treatment in MRL^{+/+} mice
Toxicological Sciences, **57**, 2000, 345-352
- Gu, Z.W.; Sele, B.; Chmara, D.; Jalbert, P.; Vincent, M.; Vincent, F.; Marka, C.; Faure, J., 1981
[Effects of trichloroethylene and its metabolites on the rate of sister-chromatid exchange. In vivo and in vitro study on the human lymphocytes. (author's transl)]
Annales de Genetique, **24**, 1981, 105-106
- Hack, C.E.; Chiu, W.A.; Zhao, Q.J.; Clewell, H.J., 2006
Bayesian population analysis of a harmonized physiologically based pharmacokinetic model of trichloroethylene and its metabolites
Regulatory Toxicology and Pharmacology, **46**, 2006, 63-83
- Haglid, K.G.; Briving, C.; Hansson, H.A.; Rosengren, L.; Kjellstrand, P.; Stravron, U.; Swedin, K.; Wronski, A., 1981
Trichloroethylene: long lasting changes in the brain after rehabilitation
Neurotoxicology, **2**, 1981, 659-673, cited in ECB, 2004
- Hansen, J.; Raaschou-Nielsen, O.; Christensen, J.M.; Johansen, I.; McLaughlin, J.K.; Lipworth, L.; Blot, W.J.; Olsen, J.H., 2001
Cancer incidence among Danish workers exposed to trichloroethylene
Journal of Occupational and Environmental Medicine, **43**, 2001, 133-139
- Hardell, L.; Lindström, G.; van Bavel, B.; Fredrikson, M.; Liljegren, G., 1998
Some aspects of the etiology of non-Hodgkin's lymphoma
Environmental Health Perspectives, **106**, Suppl. 2, 1998, 679-681
- Hardin, B.D.; Kelman, B.J.; Brent, R.L., 2005
Trichloroethylene and dichloroethylene: a critical review of teratogenicity
Birth Defects Research. Part A
Clinical and Molecular Teratology, **73**, 2005, 931-955
- Harth, V.; Brüning, T.; Bolt, H.M., 2005
The renal carcinogenicity of trichloroethylene: update, mode of action and fundamentals for occupational standard setting
Reviews in Environmental Health, **20**, 2005, 103-119
- Henschler, D.; Lehnert, G., 1983
Biologische Arbeitsstoff-Toleranz-Werte (BAT-Werte) und Expositionsäquivalente für krebserzeugende Arbeitsstoffe (EKA), Arbeitsmedizinisch-toxikologische Begründungen 1. Lfg., DFG, Deutsche Forschungsgemeinschaft, VCH Verlag Weinheim, 1983
- Henschler, D.; Lehnert, G., 1986
Biologische Arbeitsstoff-Toleranz-Werte (BAT-Werte) und Expositionsäquivalente für krebserzeugende Arbeitsstoffe (EKA), Arbeitsmedizinisch-toxikologische Begründungen 3. Lfg., DFG, Deutsche Forschungsgemeinschaft, VCH Verlag Weinheim, 1986

- Henschler, D.; Romen, W.; Elsässer, H.M.; Reichert, D.; Eder, E.; Radwan, Z., 1980
Carcinogenicity study of trichloroethylene by longterm inhalation in three animal species
Archives of Toxicology, **43**, 1980, 237-248, cited in IARC, 1995
- Henschler, D.; Vamvakas, S.; Lammert, M.; Dekant, W.; Kraus, B.; Thomas, B.; Ulm, K., 1995
Increased incidence of renal cell tumours in a cohort cardboard workers exposed to trichloroethene
Archives of Toxicology, **69**, 1995, 291-299
- Hurt, M.E.; Valentine, R.; Alvarez, L., 1993
Developmental toxicity of inhaled trans-1,2-dichloroethylene in the rat
Fundamental and Applied Toxicology, **20**, 1993, 225-230, cited in Hardin et al., 1993
- IARC, International Agency for Research an Cancer, 1995
IARC Monographs an the Evaluation of Carcinogenic Risks to Humans. Vol. 63. Dry Cleaning,
Some Chlorinated Solvents and Other Industrial Chemicals
WHO, World Health Organization, Geneva, 1995
- IARC, International Agency for Research on Cancer, 2004
IARC Monographs on the Evaluation of Carcinogenic Risks to Humans. Vol. 84. Some
Drinking Water Disinfectants and Contaminants, Including Arsenic
WHO, World Health Organization, Geneva, 2004
- Iavicoli, I.; Marinaccio, A.; Carelli, G., 2005
Effects of occupational trichloroethylene exposure on cytokine levels in workers
Journal of Occupational and Environmental Medicine, **47**, 2005, 453-457
- Irish, D.D., 1963
Aliphatic hydrocarbon solvents
In: Patty, F.A., *Industrial Hygiene and Toxicology 2*
Interscience, New York, 1963, 1309-1313, cited in ECB, 2004
- Johnson, P.D.; Goldberg, S.J.; Mays, M.Z.; Dawson, B.V., 2003
Threshold of trichloroethylene contamination in maternal drinking waters affecting fetal
heart development in the rat
Environmental Health Perspectives, **111**, 2003, 289-292
- Jones, W.M.; Margolis, G.; Stephen, C.R., 1958
Hepatotoxicity of inhalation anesthetic drugs
Anesthesiology, **19**, 1958, 715-723
- Kamijima, M., Hisanaga, N., Wang, H., Nakajima, T. (2007) Occupational trichloroethylene
exposure as a cause of ideosyncratic generalized skin disorders and accompanying hepatitis
similar to drug hypersensitivities. *Int Arch Occup Environ Health* 80: 357-370.
- Kamijima, M., Wang, H., Huang, H., Li, L., Shibata, E., Lin, B., Sakai, K., Lui, H., Tsuchiyama, F.,
Chen, J., Okamura, A., Huang, X., Hisanaga, N., Huang, Z., Ito, Y., Takeuchi, Y., Nakajima, T.
(2008) Trichloroethylene causes generalized hypersensitivity skin disorders complicated by
hepatitis. *J Occup Health* 50: 328-328.
- Kargalioglu, Y.; McMillan, B.J.; Minear, R.A.; Plewa, M.J., 2002
Analysis of the cytotoxicity and mutagenicity of drinking water disinfection by-products in
Salmonella typhimurium
Teratogenesis Carcinogenesis Mutagenesis, **22**, 2002, 113-128

- Keshava, N.; Caldwell, J.C., 2006
Key issues in the role of peroxisome proliferator-activated receptor agonism and cell signaling in trichloroethylene toxicity
Environmental Health Perspectives, **114**, 2006, 1464-1470
- Keys, D.A.; Schultz, I.R.; Mahle, D.A.; Fisher, J.W., 2004
A quantitative description of suicide inhibition of dichloroacetic acid in rats and mice
Toxicological Sciences, **82**, 2004, 381-393
- Kilburn, K.H.; Warshaw, R.H., 1992
Prevalence of symptoms of systemic lupus erythematosus (SLE) and of fluorescent antinuclear antibodies associated with chronic exposure to trichloroethylene and other chemicals in well water
Environmental Research, **57**, 1992, 1-9
- Kishi, R.; Harabuchi, I.; Ikeda, T.; Katakura, Y.; Miyake, H., 1993
Acute effects of trichloroethylene on blood concentrations and performance decrements in rats and their relevance to humans
British Journal of Industrial Medicine, **50**, 1993, 470-480
- Kjellstrand, P.; Kanje, M.; Mansson, L.; Bjerkemo, M.; Mortensen, I.; Lanke, J.; Holmquist, B., 1981
Trichloroethylene: effects on body and organ weights in mice, rats and gerbils
Toxicology, **21**, 1981, 105-115, cited in ECB, 2004
- Kjellstrand, P.; Holmquist, B.; Alm, P.; Kanje, M.; Romare, S.; Jonsson, I.; Mansson, L.; Bjerkemo, M., 1983a
Trichloroethylene: further studies of the effects on body and organ weights and plasma butyrylcholinesterase activity in mice
Acta Pharmacologica et Toxicologica, **53**, 1983, 375-384, cited in ECB, 2004
- Kjellstrand, P.; Holmquist, B.; Mandahl, N.; Bjerkemo, M., 1983b
Effects of continuous trichloroethylene inhalation on different strains of mice
Acta Pharmacologica et Toxicologica, **53**, 1983, 369-374, cited in ECB, 2004
- Kligerman, A.D.; Bryant, M.F.; Doerr, C.L.; Erexson, G.L.; Evansky, P.A.; Kwanyuen, P.; McGee, J.K., 1994
Inhalation studies of the genotoxicity of trichloroethylene to rodents
Mutation Research, **322**, 1994, 87-96, cited in UAIH, 2006
- Konietzko, H.; Haberlandt, W.; Heilbronner, H.; Reill, G.; Weichardt, H., 1978
Cytogenetische Untersuchungen an Trichloräthylen-Arbeitern
Archives of Toxicology, **40**, 1978, 201-206
- Krause, R.J.; Lash, L.H.; Elfarra, A.A., 2003
Human kidney flavin-containing monooxygenases and their potential roles in cysteine S-conjugate metabolism and nephrotoxicity
Journal of Pharmacology and Experimental Therapeutics, **304**, 2003, 185-191, cited in Chiu et al., 2006
- Kurrar, P.; Prasad, A.K.; Dutta, K.K., 2000
Steroidogenic alterations in testes and sera of rats exposed to trichloroethylene (TCE) by inhalation
Human and Experimental Toxicology, **19**, 2000, 117-121, cited in Lamb and Hentz, 2006

- Kumar, P.; Prasad, A.K.; Mani, U.; Maji, B.K.; Dutta, K.K., 2001
Trichloroethylene induced testicular toxicity in rats exposed by inhalation
Human and Experimental Toxicology, **20**, 2001, 585-589, cited in Lamb and Hentz, 2006
- Kyrklund, T.; Alling, C.; Haglid, K.; Kjellstrand, P., 1983
Chronic exposure to trichloroethylene: lipid and acyl group composition in gerbil cerebral cortex and hippocampus
Neurotoxicology, **4**, 1983, 35-42, cited in ECB, 2004
- Kyrklund, T.; Kjellstrand, P.; Haglid, K.G., 1986
Fatty acid changes in rat brain ethanolamine phosphoglycerides during and following chronic exposure to trichloroethylene
Toxicology and Applied Pharmacology, **85**, 1986, 145-153
- Lagakos, S.W.; Wessen, B.J.; Zelen, M., 1986
An analysis of contaminated well water and health effects in Woburn, Massachusetts
Journal of the American Statistical Association, **81**, 1986, 583-596
- Lamb, J.C.; Hentz, K.L., 2006
Toxicological review of male reproductive effects and trichloroethylene exposure: assessing the relevance to human male reproductive health
Reproductive Toxicology, **22**, 2006, 557-563
- Land, P.C.; Owen, E.L.; Linde, H.W., 1981
Morphologic changes in mouse spermatozoa after exposure to inhalational anesthetics during early spermatogenesis
Anesthesiology, **54**, 1981, 53-56
- Landrigan, P.J.; Kominsky, J.R., 1987
Common-source community and industrial exposure to trichloroethylene
Archives of Environmental Health, **42**, 1987, 327-332, cited in ECB, 2004
- Larson, J.L.; Bull, R.J., 1992
Species differences in the metabolism of trichloroethylene to the carcinogenic metabolites trichloroacetate and dichloroacetate
Toxicology and Applied Pharmacology, **115**, 1992, 278-285
- Lash, L.H.; Lipscomb, J.C.; Putt, D.A.; Parker, J.C., 1999
Glutathione conjugation of trichloroethylene in human liver and kidney: kinetics and individual variation
Drug Metabolism and Disposition, **27**, 1999, 351-359, cited in Chiu et al., 2006
- Lash, L.H.; Putt, D.A.; Hueni, S.E.; Krause, R.J.; Elfarra, A.A., 2003
Roles of necrosis, apoptosis, and mitochondrial dysfunction in S-(1,2-dichlorovinyl)-L-cysteine sulfoxide-induced cytotoxicity in primary cultures of human renal proximal tubular cells
Journal of Pharmacology and Experimental Therapeutics, **305**, 2003, 1163-1172, cited in Chiu et al., 2006
- Lash, L.H.; Putt, D.A.; Hueni, S.E.; Horwitz, B.P., 2005
Molecular markers of trichloroethylene-induced toxicity in human kidney cells
Toxicology and Applied Pharmacology, **206**, 2005, 157-168
- Lash, L.H.; Putt, D.A.; Parker, J.C., 2006

- Metabolism and tissue distribution of orally administered trichloroethylene in male and female rats: identification of glutathione- and cytochrome P-450-derived metabolites in liver, kidney, blood, and urine
Journal of Toxicology and Environmental Health. Part A, **69**, 2006, 1285-1309
- Lehnert, G.; Greim, H., 2003
Biologische Arbeitsstoff-Toleranz-Werte (BAT-Werte), Expositionsäquivalente für krebserzeugende Arbeitsstoffe (EKA) und Biologische Leitwerte (BLW).
Arbeitsmedizinisch-toxikologische Begründungen
11. Lfg., DFG, Deutsche Forschungsgemeinschaft, 2003
- Lock, E.A.; Reed, C.J., 2006
Trichloroethylene: mechanisms of renal toxicity and renal cancer and relevance to risk assessment
Toxicological Sciences, **91**, 2006, 313-331
- Lock, E.A.; Barth, J.L.; Argraves, S.W.; Schnellmann, R.G., 2006
Changes in gene expression in human renal proximal tubule cells exposed to low concentrations of S-(1,2-dichlorovinyl)-L-cysteine, a metabolite of trichloroethylene
Toxicology and Applied Pharmacology, **216**, 2006, 319-330
- Loeber, C.P.; Hendrix, C.P.; Diez de Pinos, S.; Goldberg, S.J., 1988
Trichloroethylene: a cardiac teratogen in developing chick embryos
Pediatric Research, **17**, 1988, 740-744, cited in Hardin et al., 2005
- Luaghter, A.R.; Dunn, C.S.; Swanson, C.L.; Howroyd, P.; Cattley, R.C.; Corton, J.C., 2004
Role of the peroxisome proliferator-activated receptor α (PPAR α) in responses to trichloroethylene and metabolites, trichloroacetate and dichloroacetate in mouse liver
Toxicology, **203**, 2004, 83-98
- Mally, A.; Walker, C.L.; Everitt, J.I.; Dekant, W.; Vamvakas, S., 2006
Analysis of renal cell transformation following exposure to trichloroethene in vivo and its metabolite S-(dichlorovinyl)-L-cysteine in vitro
Toxicology, **224**, 2006, 108-118
- Maltoni, C.; Lefermine, G.; Cotti, G., 1986
Experimental research on trichloroethylene carcinogenesis
In: Maltoni, C.; Mehllman, M.A., *Archives of Research on Industrial Carcinogenesis*. Vol. 5
Princeton Scientific, Princeton, NJ, 1986, 1-393, cited in ECB, 2004
- Maltoni, C.; Lefemine, G.; Cotti, G.; Perino, G., 1988
Long-term carcinogenicity bioassays on trichloroethylene administered by inhalation to Sprague Dawley rats and Swiss and B6C3F1 mice
Annals of the New York Academy of Sciences, **534**, 1988, 316-342
- Mandel, J.H.; Kelsh, M.A.; Min, P.J.; Alexander, D.D.; Kalmes, R.M.; Weingart, M.; Yost, L.; Goodman, M., 2006
Occupational trichloroethylene exposure and non-Hodgkin's lymphoma: a meta-analysis and review
Occupational and Environmental Medicine, **63**, 2006, 597-607
- Matsuoka, A.; Yamakage, K.; Kusakabe, H.; Wakuri, S.; Asakura, M.; Noguchi, T.; Sugiyama, T.; Shimada, H.; Nakayama, S.; Kasahara, Y.; Takahashi, Y.; Miura, K.F.; Hatanaka, M.; Ishidate,

- M.; Morita, T.; Watanabe, K.; Hara, M.; Odawara, K.; Tanaka, N.; Hayashi, M.; Sofuni, T., 1996
Re-evaluation of chromosomal aberration induction on nine mouse lymphoma assay 'unique
positive' NTP carcinogens
Mutation Research, **369**, 1996, 243-252, cited in NTP, 2000
- Mertens, J.A., 1993
Trichloroethylene
In: Kroschwitz, J.I.; Howe-Grant, M., *Encyclopedia of Chemical Technology*. Vol. 6 4th Edition,
Wiley-Interscience, New York, 1993, 40-50, cited in ECB, 2004
- Mitoma, C.; Steeger, T.; Jackson, S.E.; Wheeler, K.P.; Rogers, J.H.; Milman, H.A., 1985
Metabolic disposition study of chlorinated hydrocarbons in rats and mice
Drug and Chemical Toxicology, **8**, 1985, 183-194
- Miyagawa, M.; Takasawa, H.; Sugiyama, A.; Inoue, Y.; Murata, T.; Uno, Y.; Yoshikawa, K., 1995
The in vivo-in vitro replicative DNA synthesis (RDS) test with hepatocytes prepared from male
B6C3F1 mice as an early prediction assay for putative non-genotoxic (Ames-negative) mouse
hepatocarcinogens
Mutation Research, **343**, 1995, 157-183, cited in NTP, 2000
- Monster, A.C.; Zielhuis, R.L., 1983
In: Commission of the European Communities, *Human Biological Monitoring of Industrial
Chemicals Series*, EUR 8476 EN, Joint Research Centre, Ispra, 1983, 45, cited in Greim and
Lehnert, 1996
- Monster, A.C.; Boersma, G.; Duba, W.C., 1976
Pharmacokinetics of trichloroethylene in volunteers. Influence of workload and exposure
concentration
International Archives of Occupational and Environmental Health, **38**, 1976, 87-102, cited in
ECB, 2004
- Monster, A.C.; Boersma, G.; Duba, W.C., 1979
Kinetics of trichloroethylene in repeated exposures of volunteers
International Archives of Occupational and Environmental Health, **42**, 1979, 283-292, cited in
ECB, 2004
- Moore, M.M.; Harrington-Brock, K., 2000
Mutagenicity of trichloroethylene and its metabolites: implications for the risk assessment of
trichloroethylene
Environmental Health Perspectives, **108**, Suppl. 2, 2000, 215-223
- Morgan, R.W.; Kelsh, M.A.; Zhao, K.; Heringer, S., 1998
Mortality of aerospace workers exposed to trichloroethylene
Epidemiology, **9**, 1998, 424-431
- Müller, G.; Spassovski, M.; Henschler, D., 1972
Trichloroethylene exposure and trichloroethylene metabolites in urine and blood
Archives of Toxicology, **29**, 1972, 335-340, cited in ECB, 2004
- Müller, G.; Spassovski, M.; Henschler, D., 1974
Metabolism of trichloroethylene in man. II. Pharmacokinetics of metabolites
Archives of Toxicology, **32**, 1974, 283-295, cited in ECB, 2004

- Müller, G.; Spassovski, M.; Henschler, D., 1975
Metabolism of trichloroethylene in man. III. Interaction of trichloroethylene and ethanol
Archives of Toxicology, **33**, 1975, 173-189, cited in ECB, 2004
- Müller, M.; Birner, G.; Dekant, W., 1998
Reactivity of haloketenes and halothioketenes with nucleobases: chemical characterization of reaction products
Chemical Research in Toxicology, **11**, 1998, 454-463
- Nagaya, T.; Ishikawa, N.; Hata, H., 1989
Sister-chromatid exchanges in lymphocytes of workers exposed to trichloroethylene
Mutation Research, **22**, 1989, 279-282, cited in Greim, 1996
- Nakayama, H.; Kobayashi, M.; Takahashi, M.; Ageishi, Y.; Takano, T., 1988
Generalized eruption with severe liver dysfunction associated with occupational exposure to trichloroethylene
Contact Dermatitis, **19**, 1988, 48-51, cited in ECB, 2004
- Narotsky, M.G.; Kavlock, R.J., 1995
A multidisciplinary approach to toxicological screening: II. Developmental toxicity
Journal of Toxicology and Environmental Health, **45**, 1995, 145-171
- Narotsky, M.G.; Weller, E.A.; Chinchilli, V.M.; Kavlock, R.J., 1995
Non-additive developmental toxicity in mixtures of trichloroethylene, Di(2-ethylhexyl) phthalate, and heptachlor in a 5 x 5 x 5 design
Fundamental and Applied Toxicology, **27**, 1995, 203-216, cited in Warren et al., 2006
- National Research Council/Committee on Health Risks of Trichloroethylene, 2006

Assessing the Human Health Risks of Trichloroethylene: Key Scientific Issues. National Academy of Science of the U.S.A., ISBN 987-0-309-10283-4. Available through:
<http://www.nap.edu/catalog/11707.html>
- NIOSH, National Institute for Occupational Safety and Health, 1980
Teratogenic-mutagenic risk of workplace contaminants: trichloroethylene, perchloroethylene, and carbon disulphide. Contract No. 210-77-0047
Center for Disease Control and Prevention, Atlanta, GA, 1980, cited in Lamb and Hentz, 2006
- Nomiyama, K.; Nomiyama, H., 1971
Metabolism of trichloroethylene in human. Sex differences in urinary excretion of trichloroacetic acid and trichloroethanol
Internationales Archiv für Arbeitsmedizin, **28**, 1971, 37-48, cited in ECB, 2004
- Nomiyama, K.; Nomiyama, H., 1974a
Respiratory retention, uptake and excretion of organic solvents in man
Internationales Archiv für Arbeitsmedizin, **32**, 1974, 75-83, cited in ECB, 2004
- Nomiyama, K.; Nomiyama, H., 1974b
Respiratory elimination of organic solvents in man
Internationales Archiv für Arbeitsmedizin, **32**, 1974, 85-91, cited in ECB, 2004
- Nomiyama, K.; Nomiyama, H., 1977

- Dose-response relationship for trichloroethylene in man
International Archives of Occupational and Environmental Health, **39**, 1977, 237-248, cited in
ECB, 2004
- NRC, National Research Council, 2006
Assessing the Human Health Risks of Trichloroethylene. Key Scientific Issues
Committee on Human Health Risks of Trichloroethylene, Board on Environmental Studies
and Toxicology, Division on Earth and Life Studies.
National Academies Press, Washington, DC, 2006
- NTP, National Toxicology Program, 1985
Trichloroethylene: Reproduction and Fertility Assessment in CD-1 Mice when Administered in
the Feed. Final Report
U.S. Department of Health and Human Services; Public Health Service, 1985
- NTP, National Toxicology Program, 1988
NTP Technical Report on the Toxicology and Carcinogenesis Studies of Trichloroethylene in Four
Strains of Rats. TR 273
U.S. National Toxicology Program. NTP, Research Triangle Park, NC, cited in ECB, 2004
- NTP, National Toxicology Program, 1990
Carcinogenesis Studies of Trichloroethylene (without Epichlorohydrin) in F344/N Rats and B6C3F
Mice (Gavage Studies). TR 243
U.S. Department of Health and Human Services; Public Health Service, 1990
- NTP, National Toxicology Program, 2000
Report on Carcinogens. Background Document for Trichloroethylene. Final
U.S. Department of Health and Human Services, Research Triangle Park, NC, 2000
<http://ntp-server.niehs.nih.gov/ntp/newhomeroc/roc10/TCE.Pdf>
- Odum, J.; Foster, J.R.; Green, T., 1992
A mechanism for the development of Clara cell lesions in the mouse lung after exposure to
trichloroethylene
Chemico-Biological Interactions, **83**, 1992, 135-153
- Prendergast, J.A.; Jones, R.A.; Jenkins, L.J.; Siegel, J., 1967
Effects on experimental animals of long-term inhalation of trichloroethylene, carbon tetrachloride,
1,1,1-trichloroethane, dichlorodifluoromethane and 1,1-dichloroethylene
Toxicology and Applied Pharmacology, **10**, 1967, 270-289
- Prout, M.S.; Provan, W.M.; Green, T., 1985
Species differences in response to trichloroethylene. I. Pharmacokinetics in rats and mice
Toxicology and Applied Pharmacology, **79**, 1985, 389-400
- Raaschou-Nielsen, O.; Hansen, J.; McLaughlin, J.K.; Kolstad, H.; Christensen, J.M.; Tarone, R.E.;
Olsen, J.H., 2003
Cancer risk among workers at Danish companies using trichloroethylene: a cohort study
American Journal of Epidemiology, **158**, 2003, 1182-1192
- Radican, L.; Wartenberg, D.; Rhoads, G.G.; Schneider, D.; Wedeen, R.; Stewart, P.; Blair, A., 2006
A retrospective occupational cohort study of end-stage renal disease in aircraft workers exposed to
trichloroethylene and other hydrocarbons
Journal of Occupational and Environmental Medicine, **48**, 2006, 1-12

- Ramsey, J.C.; Andersen, M.E., 1984
A physiologically based description of the inhalation pharmacokinetics of styrene in rats and humans
Toxicology and Applied Pharmacology, **73**, 1984, 159-175
- Rasmussen, K.; Sabroe, S.; Wohlert, M.; Ingerslev, H.J.; Kappet, B.; Nielsen, J., 1988
A genotoxic study of metal workers exposed to trichloroethylene. Sperm parameters and chromosome aberrations in lymphocytes
International Archives of Occupational and Environmental Health, **60**, 1988, 419-423, cited in Greim, 1996
- Rasmussen, K.; Brogren, C.-H.; Sabroe, S., 1993
Subclinical affection of liver and kidney function and solvent exposure
International Archives of Occupational and Environmental Health, **64**, 1993, 445-448
- Reynolds, J.E.F.; Parfitt, K.; Parsons, A.V.; Sweetman, S.C., 1989
Martindale - The Extra Pharmacopoeia
Twenty-ninth Edition. p. 1127. Pub: Pharmaceutical Press, London, cited in ECB, 2004
- Rhomberg, L.R., 2000
Dose-response analyses of the carcinogenic effects of trichloroethylene in experimental animals
Environmental Health Perspectives, **108**, Suppl. 2, 2000, 343-358
- Robbiano, L.; Baroni, D.; Carrozzino, R.; Mereto, E.; Brambilla, G., 2004
DNA damage and micronuclei induced in rat and human kidney cells by six chemicals carcinogenic to the rat kidney
Toxicology, **204**, 2004, 187-195
- Salvini, M.; Binaschi, S.; Riva, M., 1971
Evaluation of the psychophysiological functions of humans exposed to trichloroethylene
British Journal of Industrial Medicine, **28**, 1971, 293-295, cited in ECB, 2004
- Sato, A.; Nakajima, T., 1978
Differences following skin or inhalation exposure in the absorption and excretion kinetics of trichloroethylene and toluene
British Journal of Industrial Medicine, **35**, 1978, 43-49, cited in ECB, 2004
- Sato, A.; Nakajima, T.; Fujiwara, Y.; Murayama, N., 1977
A pharmacokinetic model to study the excretion of trichloroethylene and its metabolites after an inhalation exposure
British Journal of Industrial Medicine, **34**, 1977, 56-63, cited in ECB, 2004
- Saunders, R.A., 1967
A new hazard in closed environmental atmospheres
Archives of Environmental Health, **14**, 1967, 380-384, cited in ECB, 2004
- Savolainen, H.; Pfaffli, P.; Tengen, M.; Vainio, H., 1977
Trichloroethylene and 1,1,1-trichloroethane: effects on brain and liver after five days intermittent inhalation
Archives of Toxicology, **38**, 1977, 229-237
- Sax, N. I.; Lewis, R. J., 1989

- Dangerous Properties of Industrial Materials. Vol. 2, 7th ed.
Van Nostrand Reinhold, New York, 1989, 1131-1132, cited in ECB, 2004
- Schirren, J.M., 1971
Skin injuries caused by trichloroethylene in a metal working firm
Berufsdermatosen, **19**, 1971, 240-245, cited in ECB, 2004
- Scialli, A.R.; Gibb, H., 2005
Trichloroethylene exposure and congenital heart defects
Birth Defects Research. Part A: Clinical and Molecular Teratology, **73**, 2005, 255-257
- Scott, C.S.; Chiu, W.A., 2006
Trichloroethylene cancer epidemiology: a consideration of select issues
Environmental Health Perspectives, **114**, 2006, 1471-1478
- Seldän, A.; Hultberg, B.; Ulander, A.; Ahlberg, G., 1993
Trichloroethylene exposure in vapour degreasing and the urinary excretion of N-acetyl-beta-D glucosaminidase
Archives of Toxicology, **67**, 1993, 224-226, cited in Greim, 2000
- Seiji, K.; Chui, J.; Watanabe, T.; Nakatsuka, H.; Ikeda, M., 1990
Sister chromatid exchanges in peripheral lymphocytes of workers exposed to benzene, trichloroethylene, or tetrachloroethylene, with reference to smoking habits
International Archives of Occupational and Environmental Health, **62**, 1990, 171-176
- Selmin, O.; Thome, P.A.; Caldwell, P.T.; Johnson, P.D.; Runyan, R.B., 2005
Effects of trichloroethylene and its metabolite trichloroacetic acid on the expression of vimentin in the rat H9c2 cell line
Cell Biology & Toxicology, **21**, 2005, 83-95
- Siegel, J.; Jones, R.A.; Coon, R.A.; Lyon, J.P., 1971
Effects on experimental animals of acute, repeated and continuous inhalation exposures to dichloroacetylene mixtures
Toxicology and Applied Pharmacology, **18**, 1971, 168-174, cited in ECB, 2004
- Simon, T.W., 1997
Combining physiologically based pharmacokinetic modeling with Monte Carlo simulation to derive an acute inhalation guidance value for trichloroethylene
Regulatory Toxicology and Pharmacology, **26**, 1997, 257-270
- Smith, D.J.; Pu, X.; Kamendulis, L.M.; Klaunig, J.E., 2005
Comparative effects of trichloroacetic acid on rodent and human hepatocytes: role of peroxisome proliferator activated receptor α (PPAR α). Abstr. No. 760
Toxicological Sciences, **84**, Suppl. 1, 2005, 155
- Smyth, H.F.; Carpenter, C.P.; Weil, C.S.; Pozzani, U.C.; Striegel, J.A., 1962
Range-finding toxicity data: List VI
Industrial Hygiene Journal, **23**, 1962, 95-107
- Smyth, H.F.; Carpenter, C.P.; Weil, C.S.; et al., 1969
Range finding toxicity data: List VII
American Industrial Hygiene Association Journal, **30**, 1969, 470-476, cited in ECB, 2004

- Soucek, B.; Vlachova, D., 1960
Excretion of trichloroethylene metabolites in human urine
British Journal of Industrial Medicine, **17**, 1960, 60-64, cited in ECB, 2004
- Spencer, P.J., Grundy, J., Linscombe, V.A., Krieger, S.M. (2003) Evaluation of trichloroethylene (TCE) in the rat bone marrow micronucleus test with kinetochores analyses and correlation to potential TCE-induced hypothermia. Study report, Toxicology & Environmental Research and Consulting, The DOW Chemical Company, Midland, MI 48674, USA
- Spirtas, R.; Stewart, P.A.; Lee, J.S.; Marano, D.E.; Forbes, C.D.; Grauman, D.J.; Pettigrew, H.M.; Blair, A.; Hoover, R.N.; Cohen, J.L., 1991
Retrospective cohort mortality study of workers at an aircraft maintenance facility. I. Epidemiological results
British Journal of Industrial Medicine, **48**, 1991, 515-530
- Stewart, R.D.; Dodd, H.C., 1964
Absorption of carbon tetrachloride, trichloroethylene, tetrachloroethylene, methylene chloride, and 1,1,1-trichloroethane through the human skin
Industrial Hygiene Journal, **25**, 1964, 439-446, cited in ECB, 2004
- Stewart, R.D.; Dodd, H.C.; Gay, H.H.; Erley, D.S., 1970
Experimental human exposure to trichloroethylene
Archives of Environmental Health, **20**, 1970, 64-71
- Stewart, R.D.; Hake, C.L.; LeBurn, A.J.; et al., 1974
Biologic standards for the industrial worker by breath analysis: trichloroethylene
NIOSH Research Report. Publication No. 74-133, cited in ECB, 2004
- Stopps, G.J.; McLaughlin, M., 1967
Psychophysiological testing of human subjects exposed to solvent vapours
American Industrial Hygiene Association Journal, **28**, 1967, 43-50, cited in ECB, 2004
- Tang, X., Que, B., Song, X., Li, S., Yang, X., Wang, H., Huang, H., Kamijima, M., Nakajima, T., Lin, Y., Li, L. (2008) Characterization of liver injury associated with hypersensitive skin reactions induced by trichloroethylene in the Guinea pig maximization test. *J Occup Health* **50**: 114-121.
- Tao, L.; Ge, R.; Xie, M.; Kramer, P.M.; Pereira, M.A., 1999
Effect of trichloroethylene on DNA methylation and expression of early-intermediate protooncogenes in the liver of B6C3F1 mice
Journal of Biochemical and Molecular Toxicology, **13**, 1999, 231-237, cited in NTP, 2000
- Taskinen, H.; Kyyrönen, P.; Hemminki, K.; Hoikkala, M.; Lajunen, K.; Lindbohm, M.-L., 1994
Laboratory work and pregnancy outcome
Journal of Occupational Medicine, **36**, 1994, 311-319
- Tsuruta, H., 1978
Percutaneous absorption of trichloroethylene in mice
Industrial Health, **16**, 1978, 145-148, cited in ECB, 2004
- UA III, AK "Grenzwerte und Einstufungen für CM-Stoffe", 2006
Bewertung zu Trichlorethen (Trichlorethylen, TRI) des AK "Grenzwerte und Einstufungen für CM-Stoffe" im UA III des AGS, Juli 2006

- Vamvakas, S.; Brüning, T.; Thomasson, B.; Lammert, M.; Baumüller, A.; Bolt, H.M.; Dekant, W.; Birner, G.; Henschler, D.; Ulm, K., 1998
Increased incidence of renal cell tumors in a cohort of cardboard workers exposed to trichloroethene
Journal of Cancer Research and Clinical Oncology, **124**, 1998, 374-382
- Vandervort, R.; Polakoff, P.L.; Flesch, J.P., 1973
Health Hazard Evaluation of Dunham-Bush, Inc. HHE 72-84-31
National Institute of Occupational Safety and Health, 1973, cited in EPA, 2001
- Vernon, R.J.; Ferguson, R.K., 1969
Effects of trichloroethylene on visual motor performance
Archives of Environmental Health, **18**, 1969, 894-900, cited in ECB, 2004
- Villaschi, S.; Giovanetti, A.; Lombardi, C.C.; Nicolai, G.; Garbati, M.; Andreozzi, U., 1991
Damage and repair of mouse bronchial epithelium following acute inhalation of trichloroethylene
Experimental Lung Research, **15**, 1991, 601-614, cited in ECB, 2004
- Völkel, W.; Dekant, W., 1998
Chlorothioketene, the ultimate reactive intermediate formed by cysteine conjugate β -lyase-mediated cleavage of the trichloroethene metabolite S-(1,2-dichlorovinyl)-L-cysteine, forms cytosine adducts in organic solvents, but not in aqueous solution
Chemical Research in Toxicology, **11**, 1998, 1082-1088
- Vogel, E.W.; Nivard, M.J., 1993
Performance of 181 chemicals in a *Drosophila* assay predominantly monitoring interchromosomal mitotic recombination
Mutagenesis, **8**, 1993, 57-81, cited in NTP, 2000
- Wahlberg, J.E., 1984
Edema-inducing effects of solvents following topical administration
Dermatosen in Beruf und Umwelt, **32**, 1984, 91-94
- Walgren, J.L.; Jollow, D.J.; McMillan, J.M., 2004
Induction of peroxisome proliferation in cultured hepatocytes by a series of halogenated acetates
Toxicology, **197**, 2004, 189-197
- Warren, D.A.; Graeter, L.J.; Channel, S.R.; Eggers, J.S.; Goodyear, C.D.; MacMahon, K.L.; Sudberry, G.L.; Latendresse, J.R.; Fisher, J.W.; Baker, W.H., 2006
Trichloroethylene, trichloroacetic acid, and dichloroacetic acid: do they affect eye development in the Sprague-Dawley rat?
International Journal of Toxicology, **25**, 2006, 279-284
- Wartenberg, D.; Reyner, D.; Siegel-Scott, C., 2000
Trichloroethylene and cancer: epidemiologic evidence
Environmental Health Perspectives, **108**, Suppl. 2, 2000, 161-176
- Watson, R.E.; Jacobson, C.F.; Williams, A.L.; Howard, W.B.; DeSesso, J.M., 2006
Trichloroethylene-contaminated drinking water and congenital heart defects: a critical analysis of the literature
Reproductive Toxicology, **21**, 2006, 117-147

- Wilmer, J.W.; Spencer, P.J.; Grundy, J.G.; Linscombe, V.A.; Krieger, S.M.; Gollapudi, B., 2005
Trichloroethylene (TCE) inhalation did not induce cytogenetic damage in the rat bone marrow micronucleus test (MNT). Abstract No. 2224
Toxicological Sciences, **84**, Suppl. 1, 456. Full study report: see Spencer et al. (2003)
- Windemuller, F.J.B.; Ettema, J.H., 1978
Effects of combined exposure to trichloroethylene and alcohol on mental capacity
International Archives of Occupational and Environmental Health, **41**, 1978, 77-85
- Winneke, G.; Kramer, U.; Kastka, J., 1976
The influence of alcohol and of various solvent vapours on psychomotor performance
In: Horvath, M., Adverse Effects of Environmental Chemicals and Psychotropic Drugs, Vol. 2
Elsevier Scientific Publications, Amsterdam, 1976, 99-110, cited in ECB, 2004
- Wolff, D.L., 1976
Rotating rod, spontaneous locomotor activity, and passive avoidance conditioning - their suitability as functional tests in industrial toxicology
In: Horvath, M., Adverse Effects of Environmental Chemicals and Psychotropic Drugs. Vol. 2
Elsevier Scientific Publications, Amsterdam, 1976, 293-303, cited in ECB, 2004
- Wong, O., 2004
Carcinogenicity of trichloroethylene: an epidemiologic assessment
Clinics in Occupational and Environmental Medicine, **4**, 2004, 557-589
- Wu, K.L.; Berger, T.J., 2005
Reduction in oocyte fertilizability after exposure of female rats to trichloroethylene, an environmental toxin
Biology of Reproduction, Spec. Iss., 2005, 138
- Xu, H.; Tanphaichitr, N.; Forkert, P.-G.; Anupriwan, A.; Weerachayanukul, W.; Vincent, R.; Leader, A.; Wade, M.G., 2004
Exposure to trichloroethylene and its metabolites causes impairment of sperm fertilizing ability in mice
Toxicological Sciences, **82**, 2004, 590-597
- Yauck, J.S.; Malloy, M.E.; Blair, K.; Simpson, P.M.; McCarver, D.G., 2004
Proximity of residence to trichloroethylene-emitting sites and increased risk of offspring congenital heart defects among older women. Birth Defects Research. Part A
Clinical and Molecular Teratology, **70**, 2004, 808-814
- Zablotny, C.L.; Carney, E.W.; Dugard, P.H., 2002
Evaluation of trichloroethylene in a rat inhalation developmental toxicity study. Abstr. No. 1161
The Toxicologist, **66**, 2002, 237, cited in Hardin et al., 2005
- Zenick, H.; Blackburn, K.; Hope, E.; Richdale, N.; Smith, M.K., 1984
Effects of trichloroethylene exposure on male reproductive function in rats
Toxicology, **31**, 1984, 237-250

www.arbeidstilsynet.no